

B Boring Bar Code System(ISO)

S 12 M - S T F P R - 11

1

2

3

4

5

6

7

8

9

Type of Bar

Bar Diameter

Bar Length

Method of Mounting Insert

Insert Shape

Lead Angle of Boring Bar

Relief Angle of Insert

Hand of Bar

Length of Cutting Edge

1 Type of Bar

S 12 M - S T F P R - 11

"A" Steel with coolant hole

"E" Carbide bar with fixed steel head and coolant hole

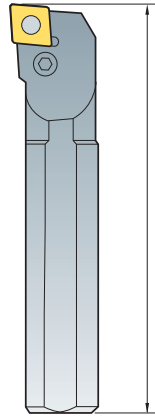
"C" Carbide shank

"S" Steel shank

"X" Special type

3 Bar Length

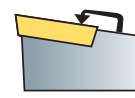
S 12 M S T F P R - 11



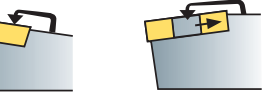
Symbol(L)	length(mm)
H	100
J	110
K	125
M	150
N	160
Q	180
R	200
S	250
T	300
U	350
V	400
W	450
Y	500

4 Method of Mounting Insert

S 12 M S T F P R - 11



Top clamping



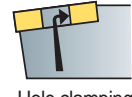
Top and hole clamping

C

D



Top and hole clamping



Hole clamping

M

P

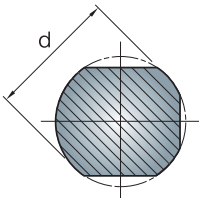


Screw on

S

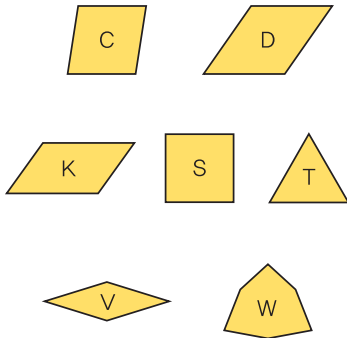
2 Bar Diameter

S 12 M - S T F P R - 11



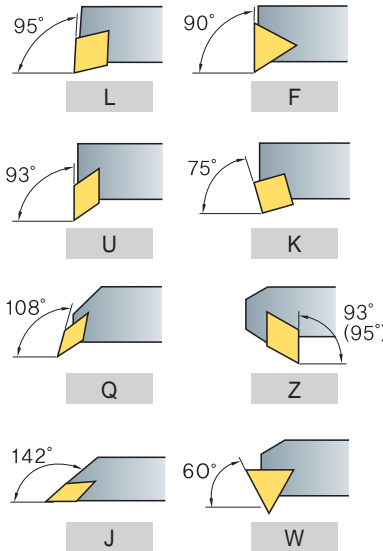
5 Insert Shape

S 12 M - S T F P R - 11



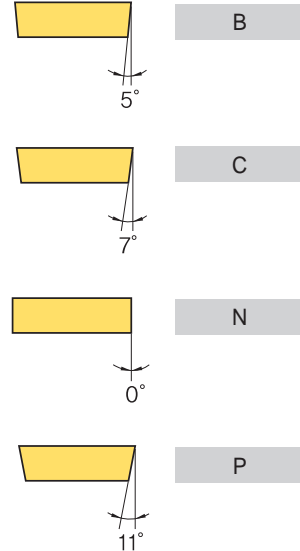
6 Lead Angle of Boring Bar

S 12 M - S T F P R - 11



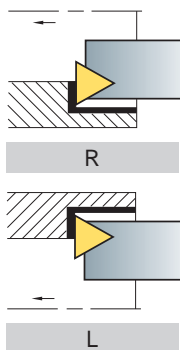
7 Relief Angle of Insert

S 12 M - S T F P R - 11



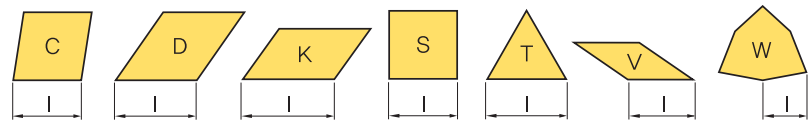
8 Hand of Bar

S 12 M - S T F P R - 11



9 Length of Cutting Edge

S 12 M - S T F P R - 11



Double Clamp System

Cutting Shape								
Designation	DCLNR/L	DDUNR/L	DSKNR/L	DTFNR/L	DWLNR/L			
Approach angle	95°	93°	75°	90°	95°			
Page	B208	B208	B208	B209	B209			
Copying		●						
Facing	●				●			
Back turning		●						
Turning	●	●	●	●	●			

Lever Lock System

Cutting Shape								
Designation	PCLNR/L	PDSNR/L	PDUNR/L	PSKNR/L	PTFNR/L	PWLNR/L		
Approach angle	95°	62.5°	93°	75°	90°	95°		
Page	B210	B210	B210	B211	B211	B211		
Copying		●	●					
Facing	●					●		
Back turning		●	●			●		
Turning	●	●	●	●	●	●		

Clamp on System

Cutting Shape								
Designation	CKUNR/L	CSKPR/L	CTFPR/L					
Approach angle	93°	75°	90°					
Page	B212	B212	B212					
Copying								
Facing								
Back turning	●							
Turning	●	●	●					

Multi Lock System

Cutting Shape								
Designation	MCLNR/L	MDUNR/L	MSKNR/L	MTFNR/L	MVUNR/L	MWLNR/L		
Approach angle	95°	93°	75°	90°	93°	95°		
Page	B213	B213	B213	B214	B214	B214		
Copying		●			●			
Facing	●					●		
Back turning		●			●			
Turning	●	●	●	●	●	●		

B Index for Boring Bar

Screw on System

Cutting Shape								
Designation	SCLCR/L	SCLPR/L	SDQCR/L	SDUCR/L	SDZCR/L	SSKCR/L	SSKPR/L	STFCR/L
Approach angle	95°	95°	107.5°	93°	93°	75°	75°	90°
Page	B215	B216	B217	B218	B219	B219	B219	B220
Copying			●	●				
Facing	●	●						
Back turning			●	●	●			
Turning	●	●	●	●	●	●	●	●

Cutting Shape								
Designation	STFPR/L	STWPR/L	SVJCR/L	SVQBR/L	SVQCR/L	SVUBR/L	SVUCR/L	SWLCR/L
Approach angle	90°	60°	142°	108°	108°	93°	93°	95°
Page	B221	B221	B222	B222	B223	B223	B223	B224
Copying			●	●	●	●	●	●
Facing								
Back turning				●	●	●	●	●
Turning	●	●	●	●	●	●	●	●

Compact Mini

Cutting Shape								
Designation	SCLCR/L	STUBR/L	STLBR/L	STUPR/L	SWUBR/L			
Approach angle	95°	93°	95°	93°	93°			
Page	B225	B225	B225	B226	B227			
Copying								
Facing	●	●	●					
Back turning				●				
Turning	●	●	●	●	●			

Carbide Shank Boring Bar

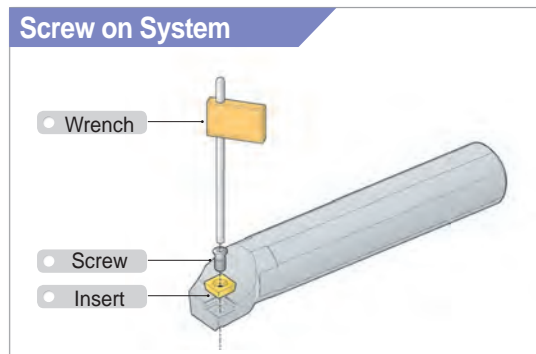
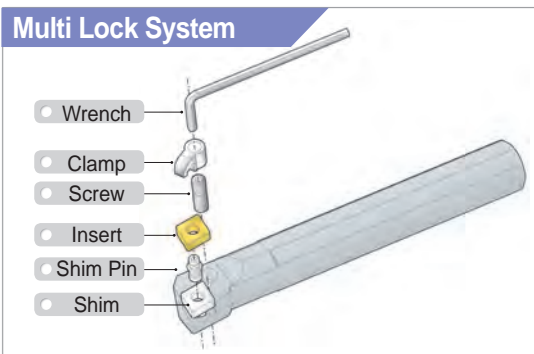
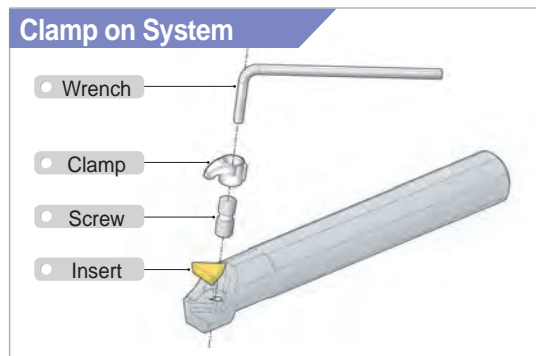
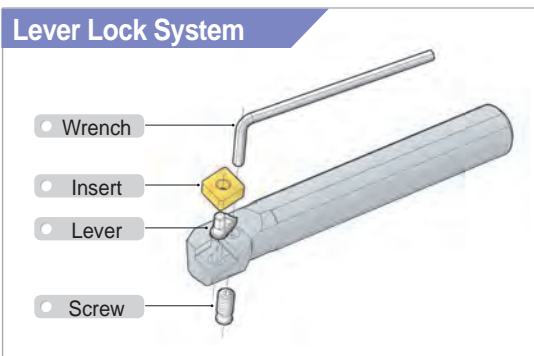
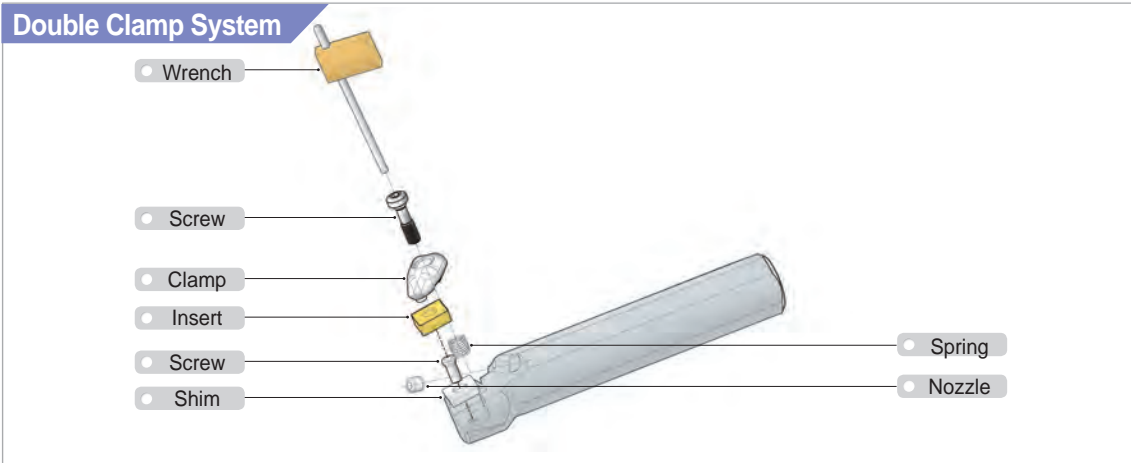
Designation	SCLCR/L	SCLPR/L	SDQCR/L	SDUCR/L	STFCR/L
Approach angle	95°	95°	107.5°	93°	90°
Page	B215	B216	B217	B218	B220
Designation	STFPR/L	STUBR/L	STUPR/L	SWUBR/L	-
Approach angle	90°	93°	93°	93°	-
Page	B221	B225	B226	B227	-

Sleeve

Shape	
Designation	SL
Page	B151



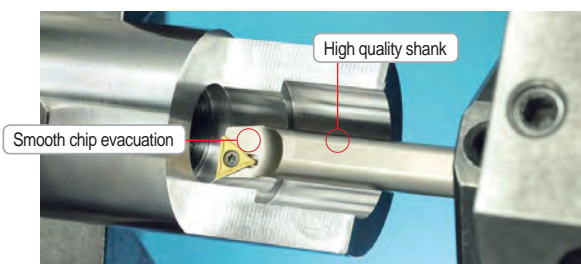
Instructions of Boring Bar assembly



Carbide Shank Boring Bar

- Excellent cutting performance even in internal machining with chattering
- Available for various workpieces such as steel, stainless steel, cast iron, etc.
- Improved tool life and surface roughness

Features



Higher strength and durability than steel shank, special surface treatment applied

Comparison of chipping

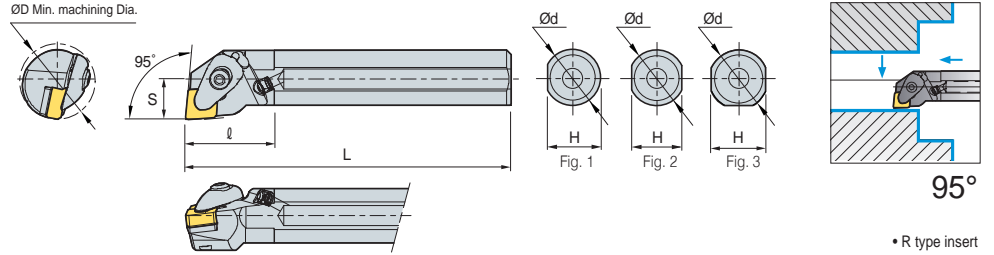
Specifications	Steel boring bar			Carbide boring bar		
	Increased chipping on insert			Stable tool life		
• SCM440						
• vc (m/min) = 200						
• ap (mm) = 0.4						
• fn (mm/rev) = 0.15						
• Cutting depth: 5D						
	Rmax	Rz	Ra	Rmax	Rz	Ra
	4.67	3.68	0.62	3.07	2.76	0.53

B Double Clamp System

DCLNR/L



CN□□



95°

• R type insert (mm)

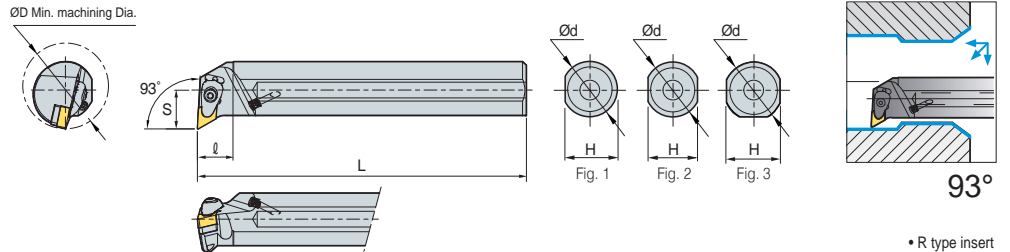
Designation	ØD	Ød	H	L	S	l	Insert	Clamp	Clamp Screw	Shim	Shim Screw	Spring	Nozzle	Wrench	Fig.
A25R-DCLNR/L-09	32	25	24	200	17	40	CN□□0903□□	CVH3	CHX0415	SC32V	FTKA0307	SPR0510	CN0605	HW25P	1
A25R-DCLNR/L-12	32	25	24	200	17	40	CN□□1204□□	CVH4	CHX0518	SC42V	FTKA0410	SPR0714	CN0605	HW30P	1
A32S-DCLNR/L-12	40	32	30	250	22	50									3
A40T-DCLNR/L-12	50	40	38	300	27	60									
A50U-DCLNR/L-16	63	50	48	350	35	70	CN□□1606□□	CVH5	CHX0622	SC54V	FTNA0511	SPR0811	CN0605	HW40L	3

➔ Applicable inserts B36-B42

DDUNR/L



DN□□



93°

• R type insert (mm)

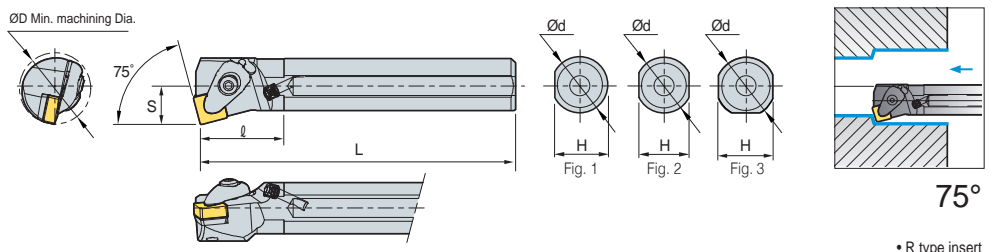
Designation	ØD	Ød	H	L	S	l	Insert	Clamp	Clamp Screw	Shim	Shim Screw	Spring	Nozzle	Wrench	Fig.
A40T-DDUNR/L-15	50	40	38	300	27	60	DN□□1506□□	CVH4	CHX0518	SD43V	FTKA0410	SPR0714	CN0605	HW30P	3
A50U-DDUNR/L-15	63	50	47	350	35	70									
A40T-DDUNR/L-15 -3	50	40	37	300	25	60	DN□□1504□□	CVH4	CHX0518	SD44V	FTKA0410	SPR0714	CN0605	HW30P	3
A50U-DDUNR/L-15 -3	63	50	47	350	35	70									

➔ Applicable inserts B43-B48

DSKNR/L



SN□□



75°

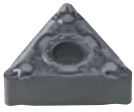
• R type insert (mm)

Designation	ØD	Ød	H	L	S	l	Insert	Clamp	Clamp Screw	Shim	Shim Screw	Spring	Nozzle	Wrench	Fig.
A25R-DSKNR/L-09	32	25	24	200	17	40	SN□□0903□□	CVH3	CHX0415	SS32V	FTKA0307	SPR0510	CN0605	HW25P	1
A25R-DSKNR/L-12	32	25	24	200	17	40	SN□□1204□□	CVH4	CHX0518	SS42V	FTKA0410	SPR0714	CN0605	HW30P	1
A32S-DSKNR/L-12	40	32	30	250	22	50									3
A40T-DSKNR/L-12	50	40	38	300	27	60									

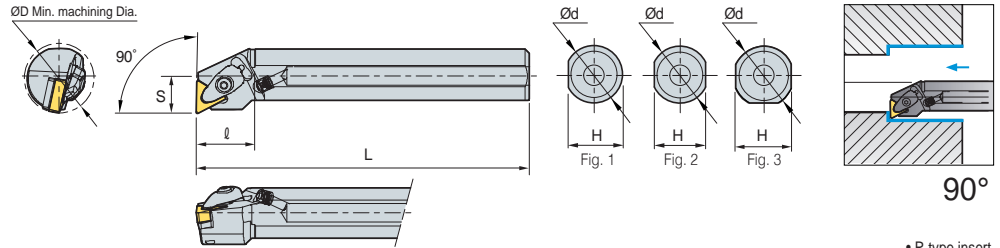
➔ Applicable inserts B50-B57



DTFNR/L



TN□□



• R type insert (mm)

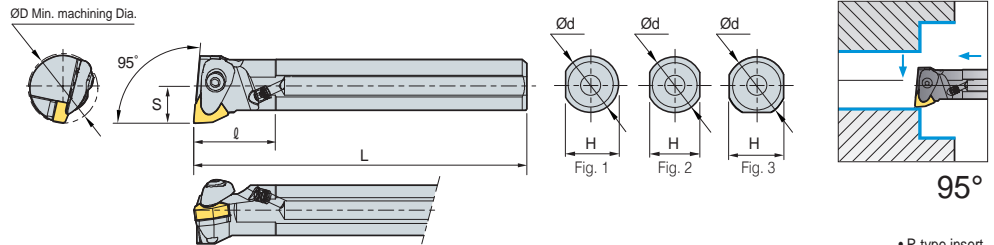
Designation	ØD	Ød	H	L	S	ℓ	Insert	Clamp	Clamp Screw	Shim	Shim Screw	Spring	Nozzle	Wrench	Fig.
A25R-DTFNR/L-16	32	25	24	200	17	40	TN□□1604□□	CVH3	CHX0415	ST32V	FTKA0307	SPR0510	CN0605	HW25P	1
A32S-DTFNR/L-16	40	32	30	250	22	50									3
A40T-DTFNR/L-22	50	40	38	300	27	60									
A50U-DTFNR/L-22	63	50	47	350	35	70	TN□□2204□□	CVH4	CHX0518	ST44V	FTKA0410	SPR0714	CN0605	HW30P	3

↻ Applicable inserts B58-B65

DWLNR/L



WN□□



• R type insert (mm)

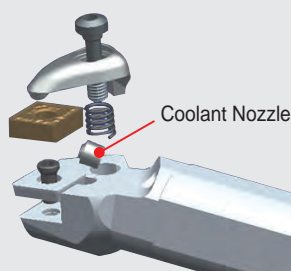
Designation	ØD	Ød	H	L	S	ℓ	Insert	Clamp	Clamp Screw	Shim	Shim Screw	Spring	Nozzle	Wrench	Fig.
A25R-DWLNR/L-06	32	25	24	200	17	40									1
A32S-DWLNR/L-06	40	32	30	250	22	50	WN□□0604□□	CVH3	CHX0415	SW32V	FTKA0307	SPR0510	CN0605	HW25P	3
A40T-DWLNR/L-06	50	40	38	300	27	60									
A25R-DWLNR/L-08	32	25	24	200	17	40									1
A32S-DWLNR/L-08	40	32	30	250	22	50									
A40T-DWLNR/L-08	50	40	38	300	27	60	WN□□0804□□	CVH4	CHX0518	SW42V	FTKA0410	SPR0714	CN0605	HW30P	3
A50U-DWLNR/L-08	63	50	47	350	35	70									

↻ Applicable inserts B68-B72



Features of Double Clamp (Boring bar)

Longer tool life and excellent surface finish can be achieved with the adjustable Coolant Nozzle

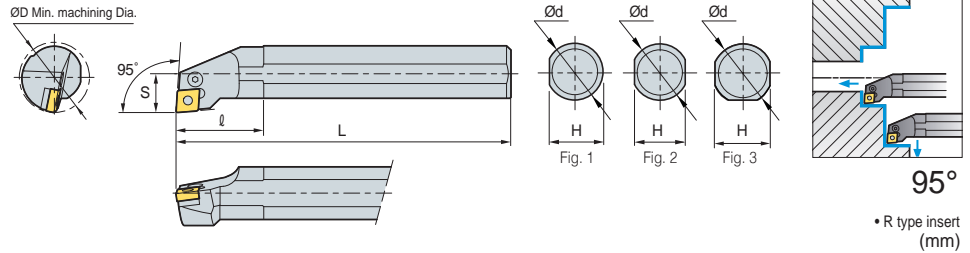


B Lever Lock System

PCLNR/L



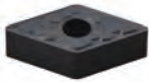
CN□□



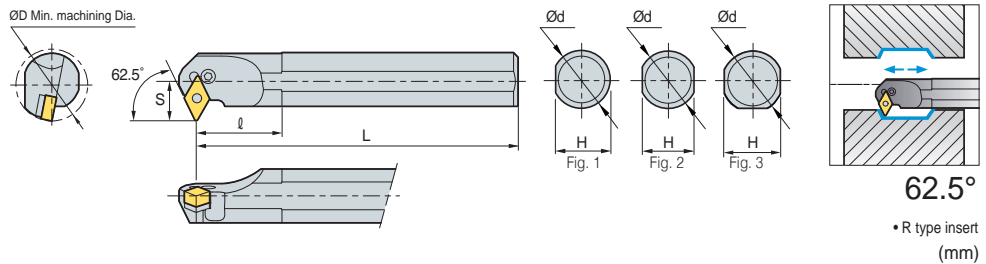
Designation	ØD	Ød	H	L	S	l	Insert	Lever	Screw	Shim	Shim Pin	Shim Pin Punch	Wrench	Fig.
S16R-PCLNR/L-09	20	16	14	200	11	25	CN□□0903□□	LV3C	VHX0509B	-	-	-	HW20L	2
S20S-PCLNR/L-09	25	20	18	250	13	32		3						
S25R-PCLNR/L-09	32	25	23	200	17	40	CN□□1204□□	LV4A	VHX0613A	-	-	-	HW25L	3
S25R-PCLNR/L-12	32	25	23	200	17	40		LV4	VHX0821	SC42B	SP4	LSPS4	HW30L	
S25T-PCLNR/L-12	32	25	23	300	17	40		LV4	VHX0821	SC43B	SP4	-	HW30L	
S32S-PCLNR/L-12	40	32	30	250	22	50		LV4	VHX0821	SC42B	SP4	LSPS4	HW30L	
S32U-PCLNR/L-12	40	32	30	350	22	50		LV6	VHX1027	SC63	SP6	LSPS6	HW40L	3
S40T-PCLNR/L-12	50	40	38	300	27	60		CN□□1906□□	LV4A	VHX0613A	-	-	-	HW25L
S50U-PCLNR/L-12	63	50	47	350	35	70	CN□□1204□□	LV4	VHX0821	SC42B	SP4	LSPS4	HW30L	3
S50U-PCLNR/L-19	63	50	47	350	35	70		LV4	VHX0821	SC42B	SP4	LSPS4	HW30L	3
A25R-PCLNR/L-12	32	25	24	200	17	40	CN□□1204□□	LV4	VHX0821	SC42B	SP4	LSPS4	HW30L	3
A32S-PCLNR/L-12	40	32	30	250	22	50		LV4	VHX0821	SC42B	SP4	LSPS4	HW30L	3
A40T-PCLNR/L-12	50	40	38	300	27	60		LV4	VHX0821	SC42B	SP4	LSPS4	HW30L	3

↻ Applicable inserts B36-B42

PDSNR/L



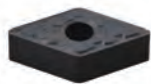
DN□□



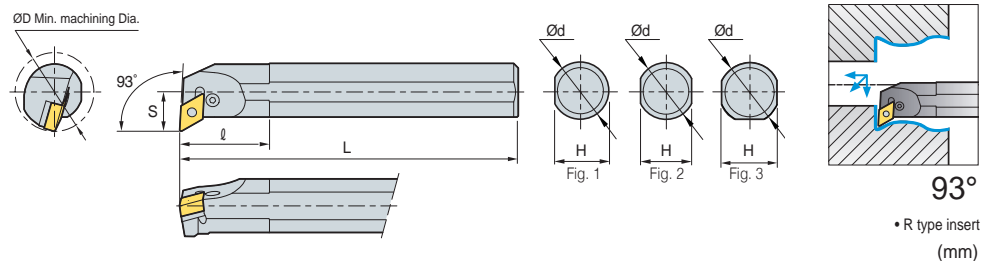
Designation	ØD	Ød	H	L	S	l	Insert	Lever	Screw	Shim	Shim Pin	Shim Pin Punch	Wrench	Fig.
S32S-PDSNR/L-15	40	32	30	250	22	50	DN□□1506□□	LV4B	VHX0821	SD42	SP4	LSPS4	HW30L	3
S40T-PDSNR/L-15	50	40	38	300	27	60		LV4	VHX0821	SD42	SP4	LSPS4	HW30L	
S32S-PDSNR/L-15-3	40	32	30	250	22	50	DN□□1506□□	LV4B	VHX0821	SD42	SP4	LSPS4	HW30L	
S40T-PDSNR/L-15-3	50	40	38	300	27	60	DN□□1504□□	LV4	VHX0821	SD42	SP4	LSPS4	HW30L	3
A32S-PDSNR/L-15	40	32	30	250	22	50	DN□□1506□□	LV4B	VHX0821	SD42	SP4	LSPS4	HW30L	3
A32S-PDSNR/L-15-3	40	32	30	250	22	50	DN□□1504□□	LV4	VHX0821	SD42	SP4	LSPS4	HW30L	3

↻ Applicable inserts B43-B48

PDUNR/L



DN□□



Designation	ØD	Ød	H	L	S	l	Insert	Lever	Screw	Shim	Shim Pin	Shim Pin Punch	Wrench	Fig.
S32S-PDUNR/L-11	40	32	30	250	22	50	DN□□1104□□	LV3	VHX0617	SD317	SP3	LSPS3	HW25L	3
S32S-PDUNR/L-15	40	32	30	250	22	50	DN□□1506□□	LV4B	VHX0821	SD42	SP4	LSPS4	HW30L	3
S40T-PDUNR/L-15	50	40	38	300	27	60		LV4	VHX0821	SD42	SP4	LSPS4	HW30L	
S50U-PDUNR/L-15	63	50	47	350	35	70	DN□□1504□□	LV4	VHX0821	SD42	SP4	LSPS4	HW30L	3
S32S-PDUNR/L-15-3	40	32	30	250	22	50		LV4B	VHX0821	SD42	SP4	LSPS4	HW30L	
S40T-PDUNR/L-15-3	50	40	38	300	27	60		LV4	VHX0821	SD42	SP4	LSPS4	HW30L	
A32S-PDUNR/L-15	40	32	30	250	22	50	DN□□1506□□	LV4B	VHX0821	SD42	SP4	LSPS4	HW30L	3
A32S-PDUNR/L-15-3	40	32	30	250	22	50	DN□□1504□□	LV4	VHX0821	SD42	SP4	LSPS4	HW30L	3

↻ Applicable inserts B43-B48



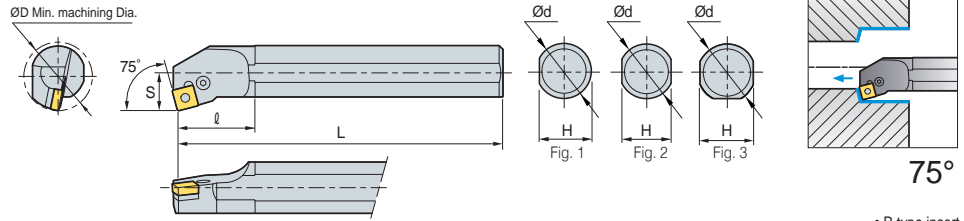
B

Turning

PSKNR/L



SN□□

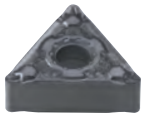


• R type insert (mm)

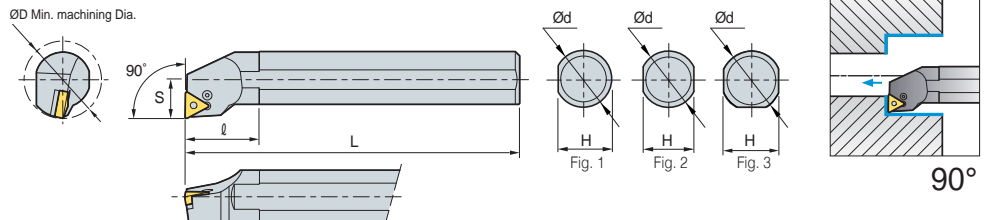
Designation	ØD	Ød	H	L	S	l	Insert	Lever	Screw	Shim	Shim Pin	Shim Pin Punch	Wrench	Fig.
S25R-PSKNR/L-12	32	25	23	200	17	40	SN□□1204□□	LV4A	VHX0613A	-	-	-	HW30L	3
S32S-PSKNR/L-12	40	32	30	250	22	50		LV4	VHX0821	SS42B	SP4	LSPS4	HW30L	
S40T-PSKNR/L-12	50	40	38	300	27	60	SN□□1204□□	LV4A	VHX0613A	-	-	-	HW25L	1
A25R-PSKNR/L-12	32	25	24	200	17	40		LV4	VHX0821	SS42B	SP4	LSPS4	HW30L	3
A32S-PSKNR/L-12	40	32	30	250	22	50								

↻ Applicable inserts B50~B57

PTFNR/L



TN□□



• R type insert (mm)

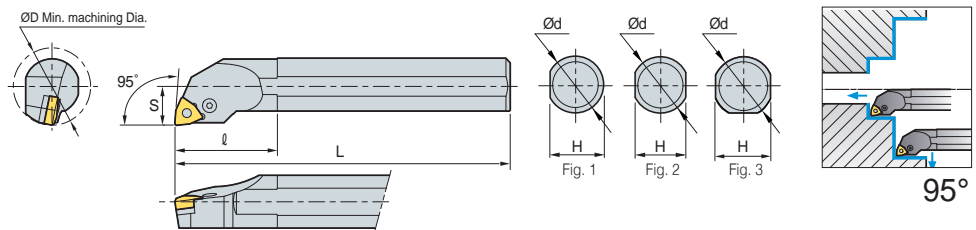
Designation	ØD	Ød	H	L	S	l	Insert	Lever	Screw	Shim	Shim Pin	Shim Pin Punch	Wrench	Fig.
S16R-PTFNR/L-11	20	16	14	200	11	25	TN□□1103□□	LV2	VHX0509B	-	-	-	HW25L	2
S20S-PTFNR/L-11	25	20	18	250	13	32								3
S25R-PTFNR/L-11	32	25	23	200	17	40	TN□□1604□□	LV3B	VHX0512B	-	-	-	HW20L	3
S25R-PTFNR/L-16	32	25	23	200	17	40		LV3	VHX0617	ST317B	SP3	LSPS3	HW25L	
S32S-PTFNR/L-16	40	32	30	250	22	50		LV3	VHX0617	-	-	-	HW25L	1
S40T-PTFNR/L-16	50	40	38	300	27	60		LV3	VHX0617	ST317B	SP3	LSPS3	HW25L	3
A25R-PTFNR/L-16	32	25	24	200	17	40								
A32S-PTFNR/L-16	40	32	30	250	22	50								

↻ Applicable inserts B58~B65

PWLNR/L



WN□□



• R type insert (mm)

Designation	ØD	Ød	H	L	S	l	Insert	Lever	Screw	Shim	Shim Pin	Shim Pin Punch	Wrench	Fig.
S16R-PWLNR/L-06	20	16	14	200	11	25	WNMG060408	LV3B	VHX0512B	-	-	-	HW20L	2
S20S-PWLNR/L-06	25	20	18	250	13	32	WN□□0604□□	LV3B	VHX0512B	-	-	-	HW20L	2
S25R-PWLNR/L-06	32	25	23	200	17	40		LV3	VHX0617	SW317	SP3	LSPS3	HW25L	3
S32S-PWLNR/L-06	40	32	30	250	22	50	WN□□0804□□	LV4A	VHX0613A	-	-	-	HW25L	3
S25R-PWLNR/L-08	32	25	23	200	17	40		LV4	VHX0821	SW42	SP4	LSPS3	HW30L	
S32S-PWLNR/L-08	40	32	30	250	22	50								

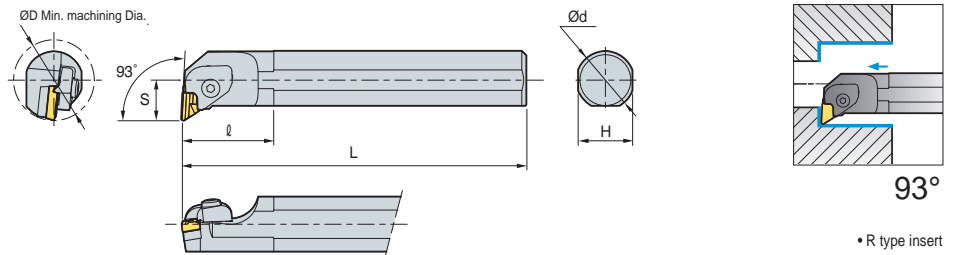
↻ Applicable inserts B68~B72

B Clamp on System

CKUNR/L



KN□□

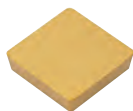


Designation	ØD	Ød	H	L	S	ℓ	Insert	Clamp	Clamp Screw	Spring	Shim	Pin+Spring	Shim Screw	Wrench							
S32S-CKUNR-16	40	32	30	250	22	70	KN□□1604□□L														
S40T-CKUNR-16	50	40	37	300	27	60									CTH6LI	CHX0625	SR3	SK33CL	PN0515 SR4	SHX0310	HW40L HW20L
S50U-CKUNR-16	63	50	43	350	35	55															
S32S-CKUNL-16	40	32	30	250	22	70	KN□□1604□□R														
S40T-CKUNL-16	50	40	37	300	27	60									CTH6RI	CHX0625	SR3	SK33C	PN0515 SR4	SHX0310	HW40L HW20L
S50U-CKUNL-16	63	50	43	350	35	55															

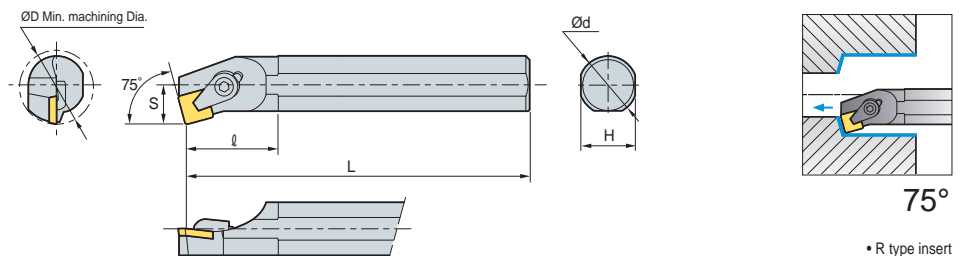
➔ Applicable inserts B49

• Use left handed insert for right handed holder

CSKPR/L



SP□□



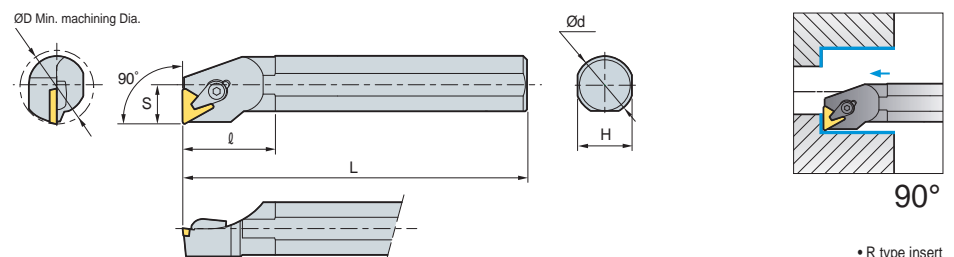
Designation	ØD	Ød	H	L	S	ℓ	Insert	Clamp	Clamp Screw	C-ring	Wrench
S16R-CSKPR/L-09	20	16	15	200	11	30	SP□□0903□□				
S20S-CSKPR/L-09	25	20	18	250	13	36					
S20S-CSKPR/L-12	25	20	18	250	13	28	SP□□1203□□				
S25R-CSKPR/L-12	32	25	23	300	17	40					
								CH6R5	CH0616	CR04C	HW30L

➔ Applicable inserts B85-B86

CTFPR/L



TP□□



Designation	ØD	Ød	H	L	S	ℓ	Insert	Clamp	Clamp Screw	C-ring	Shim	Shim Pin	Wrench						
S12M-CTFPR/L-11	16	12	11	150	9	26	TP□□1103□□												
S16R-CTFPR/L-11	20	16	15	200	11	40								CH4R1C	CHX0414C	CR02C	-	-	HW25L
S20S-CTFPR/L-11	25	20	18	250	13	40													
S16R-CTFPR/L-16	20	16	15	200	11	40	TP□□1603□□												
S20S-CTFPR/L-16	25	20	18	250	13	40								CH5R5C	CHX0519C	CR03C	-	-	HW30L
S25R-CTFPR/L-16	32	25	23	200	17	40													
S32S-CTFPR/L-16	40	32	30	250	22	45													
S40T-CTFPR/L-16	50	40	37	300	27	60													
S40T-CTFPR/L-22	50	40	37	300	27	60	TP□□2204□□	CH83R1	CH0823C	CR05C	ST43C	SP4C	HW40L						

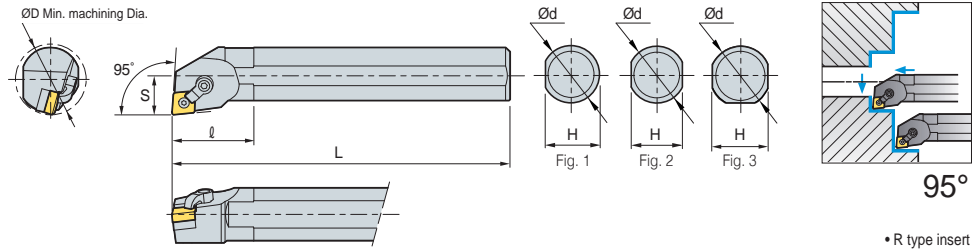
➔ Applicable inserts B90-B93



MCLNR/L



CN□□



• R type insert (mm)

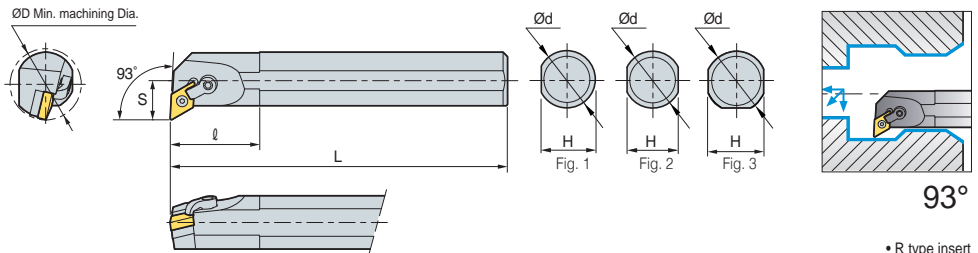
Designation	ØD	Ød	H	L	S	ℓ	Insert	Clamp	Clamp Screw	Shim	Shim Pin	Wrench	Fig.
S20S-MCLNR/L-09	25	20	18	200	13	32	CN□□0903□	CDH7N	DHA10/32-19	-	SP3D3	HW19.8L HW23.8L	2
S25R-MCLNR/L-09	32	25	23	250	17	40							3
S25R-MCLNR/L-12	32	25	23	200	17	40	CN□□1204□	CDH6N	DHA1/4-21	SC43D	SP4DS	HW31.8L HW23.8L	3
S32S-MCLNR/L-12	40	32	30	250	22	50							3
S40T-MCLNR/L-12	50	40	38	300	27	60	CN□□1204□	CDH6N	DHA1/4-21	-	SP4DS	HW31.8L	1
A25R-MCLNR/L-12	32	25	24	200	17	40							3
A32S-MCLNR/L-12	40	32	30	250	22	50							3

➔ Applicable inserts B36~B42

MDUNR/L



DN□□



• R type insert (mm)

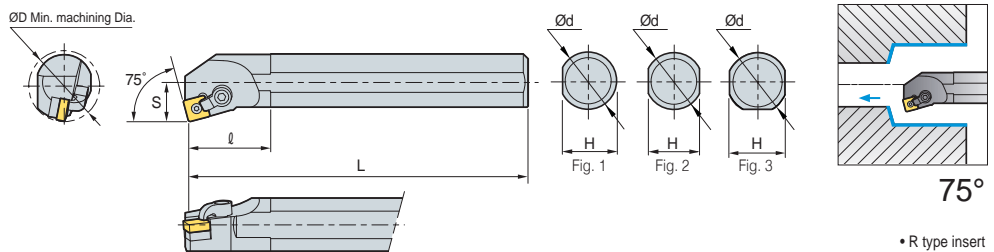
Designation	ØD	Ød	H	L	S	ℓ	Insert	Clamp	Clamp Screw	Shim	Shim Pin	Wrench	Fig.
S32S-MDUNR/L-15-3	40	32	30	250	22	50	DN□□1504□	CDH6N	DHA1/4-21	SD43D	SP4D	HW31.8L HW23.8L	3
S40T-MDUNR/L-15-3	50	40	38	300	27	60							3
A32S-MDUNR/L-15-3	40	32	30	250	22	50							3

➔ Applicable inserts B43~B48

MSKNR/L



SN□□

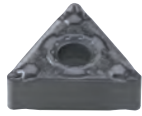


• R type insert (mm)

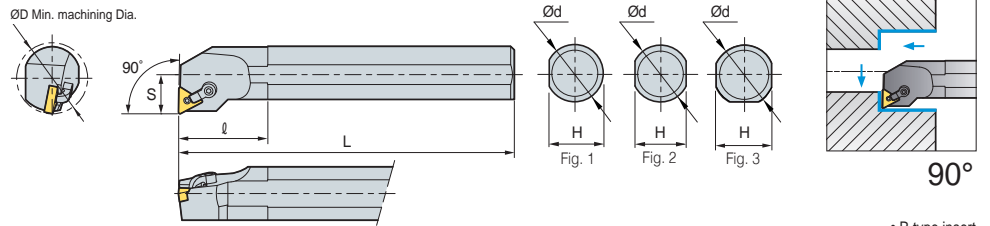
Designation	ØD	Ød	H	L	S	ℓ	Insert	Clamp	Clamp Screw	Shim	Shim Pin	Wrench	Fig.
S25R-MSKNR/L-12	32	25	23	200	17	40	SN□□1204□	CDH8N1	DHA5/16-28	SS43D	SP4D	HW39.7L HW23.8L	3
S32S-MSKNR/L-12	40	32	30	250	22	50							3
S40T-MSKNR/L-12	50	40	38	300	27	60	SN□□1204□	CDH8N1	DHA5/16-28	-	SP4DS	HW39.7L	1
A25R-MSKNR/L-12	32	25	23	200	17	40							3
A32S-MSKNR/L-12	40	32	30	250	22	50							3
A40T-MSKNR/L-12	50	40	38	300	27	60							3

➔ Applicable inserts B50~B57

MTFNR/L



TN□□



• R type insert (mm)

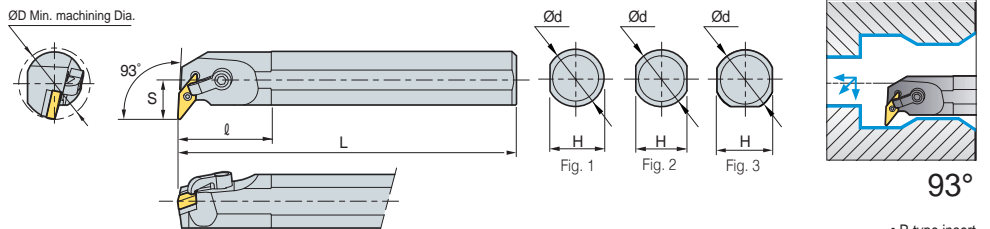
Designation	ØD	Ød	H	L	S	ℓ	Insert	Clamp	Clamp Screw	Shim	Shim Pin	Wrench	Fig.
S25R-MTFNR/L-16	32	25	23	200	17	40	TN□□1604□	CDH7N1	DHA10/32-19	-	SP3D3	HW23.8L	3
S32S-MTFNR/L-16	40	32	30	250	22	50							
S40T-MTFNR/L-16	50	40	38	300	27	60	TN□□1604□	CDH7N1	DHA10/32-19	ST32D	SP3D	HW19.8L	3
A25R-MTFNR/L-16	32	25	24	200	17	40							
A32S-MTFNR/L-16	40	32	30	250	22	50		CDH7N1	DHA10/32-19	ST32D	SP3D	HW19.8L	3

➔ Applicable inserts B58-B65

MVUNR/L



VN□□

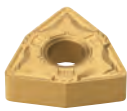


• R type insert (mm)

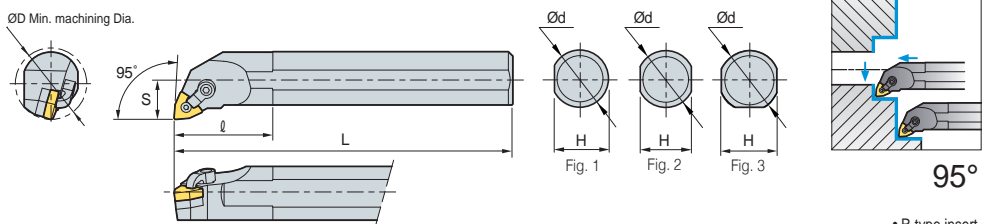
Designation	ØD	Ød	H	L	S	ℓ	Insert	Clamp	Clamp Screw	Shim	Shim Pin	Wrench	Fig.
S32S-MVUNR/L-16	40	32	30	250	22	50	VN□□1604□	CDH8N2	DHA5/16-28	SV32D	SP3D	HW39.7L	3
S40T-MVUNR/L-16	50	40	38	300	27	60							
A32S-MVUNR/L-16	40	32	30	250	22	50	VN□□1604□	CDH8N2	DHA5/16-28	SV32D	SP3D	HW39.7L	3
A40T-MVUNR/L-16	50	40	38	300	27	60							

➔ Applicable inserts B66-B67

MWLNR/L



WN□□



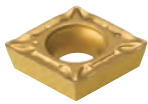
• R type insert (mm)

Designation	ØD	Ød	H	L	S	ℓ	Insert	Clamp	Clamp Screw	Shim	Shim Pin	Wrench	Fig.
S25R-MWLNR/L-06	32	25	23	200	17	40	WN□□0604□	CDH7N	DHA10/32-19	-	SP3D3	HW23.8L	3
S32S-MWLNR/L-06	40	32	30	250	22	50							
S40T-MWLNR/L-06	50	40	38	300	27	60							
S25R-MWLNR/L-08	32	25	23	200	17	40	WN□□0804□	CDH6N	DHA1/4-21	-	SP4DS	HW31.8L	3
S32S-MWLNR/L-08	40	32	30	250	22	50							
S40T-MWLNR/L-08	50	40	38	300	27	60							
A25R-MWLNR/L-06	32	25	24	200	17	40	WN□□0604□	CDH7N	DHA10/32-19	-	SP3D3	HW31.8L	1
A32S-MWLNR/L-06	40	32	31	250	22	50							
A25R-MWLNR/L-08	32	25	24	200	17	40	WN□□0804□	CDH6N	DHA1/4-21	-	SP4DS	HW31.8L	1
A32S-MWLNR/L-08	40	32	31	250	22	50							

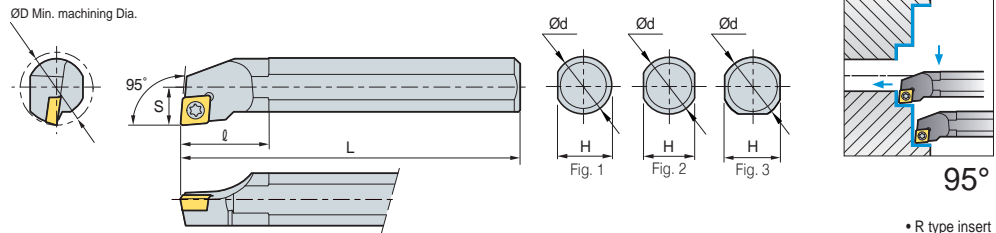
➔ Applicable inserts B68-B72



SCLCR/L



CC□T



• R type insert
(mm)

Steel shank type

Designation	ØD	Ød	H	L	S	l	Insert	Screw	Shim	Shim Screw	Wrench	Fig.
S08K-SCLCR/L-06	11	8	7.2	125	6	12	CC□T0602□□	FTKA02555	-	-	TW07	2
S10K-SCLCR/L-06	13	10	9	125	6	16		FTKA02565	-	-	TW07P	
S10M-SCLCR/L-06	13	10	9	150	6	16						
S12M-SCLCR/L-06	16	12	11	150	9	20						
S16R-SCLCR/L-06	20	16	14	200	11	25						
S12M-SCLCR/L-09	16	12	11	150	9	20	CC□T09T3□□	FTGA03508	-	-	TW15P	2
S16R-SCLCR/L-09	20	16	14	200	11	25		FTGA03510	-	-	TW15P	3
S20S-SCLCR/L-09	25	20	18	250	13	32	CC□T1204□□	FTGA0411F	-	-	TW15P	3
S25R-SCLCR/L-09	32	25	23	200	17	40		FTGA0411F	SC42S	SHXN0610F	HW40L TW15P	
S25R-SCLCR/L-12	32	25	23	200	17	40						
S32S-SCLCR/L-12	40	32	30	250	22	50	CC□T1204□□	FTGA0411F	-	-	TW15P	1
S40T-SCLCR/L-12	50	40	38	300	27	60		FTGA0411F	SC42S	SHXN0610F	HW40L,TW15P	3
A08F-SCLCR/L-06	11	8	7.6	80	6	12	CC□T0602□□	FTKA02555	-	-	TW07P	1
A10H-SCLCR/L-06	13	10	9.5	100	7	16		FTKA02565	-	-	TW07P	
A12K-SCLCR/L-06	16	12	11.5	125	9	20	CC□T09T3□□	FTGA03508	-	-	TW15P	1
A12K-SCLCR/L-09	16	12	11.5	125	9	20		FTGA03510	-	-	TW15P	
A16M-SCLCR/L-09	20	16	15	150	11	25		FTGA0411F	-	-	TW15P	
A20Q-SCLCR/L-09	25	20	19	180	13	32	CC□T1204□□	FTGA0411F	-	-	TW15P	1
A25R-SCLCR/L-09	32	25	24	200	17	40		FTGA0411F	SC42S	SHXN0610F	HW40L,TW15P	3

Carbide shank type

Designation	ØD	Ød	H	L	S	Insert	Screw	Wrench	Fig.
C04G-SCLCR/L-03	5	4	3.8	90	2.5	CC□T0301□□	FTNA01633	TW06P	1
C05H-SCLCR/L-03	6	5	4.4	100	3	CC□T0401□□	FTNA0238	TW06P	
C06H-SCLCR/L-04	7	6	5.4	100	3.5		FTKA02555	TW07P	
C07K-SCLCR/L-04	8	7	6.4	125	4	CC□T0602□□	FTKA02565	TW07P	2
C08K-SCLCR/L-06	10	8	7	125	5				
C10K-SCLCR/L-06	12	10	9	125	6				
C10M-SCLCR/L-06	12	10	9	150	6				
C12M-SCLCR/L-06	14	12	11	150	9				
C12Q-SCLCR/L-06	14	12	11	180	9	CC□T09T3□□	FTGA03508	TW15P	2
C12M-SCLCR/L-09	15	12	11	150	8				
C12Q-SCLCR/L-09	15	12	11	180	8				
C16R-SCLCR/L-09	20	16	15	200	11	CC□T09T3□□	FTGA03508	TW15P	2
C16S-SCLCR/L-09	20	16	15	250	11				
C20R-SCLCR/L-09	25	20	18	200	13	CC□T0401□□	FTNA0238	TW06P	1
C20S-SCLCR/L-09	25	20	18	250	13		FTKA02555	TW07P	
C25T-SCLCR/L-12	32	25	23	300	17	CC□T0602□□	FTKA02565	TW07P	2
E06H-SCLCR/L-04	7	6	5.4	100	3.5				
E07K-SCLCR/L-04	8	7	6.4	125	4	CC□T09T3□□	FTGA03508	TW15P	2
E08K-SCLCR/L-06	10	8	7	125	5				
E10K-SCLCR/L-06	12	10	9	125	6	CC□T1204□□	FTGA0411F	TW15P	2
E10M-SCLCR/L-06	12	10	9	150	6				
E12M-SCLCR/L-06	14	12	11	150	9				
E12Q-SCLCR/L-06	14	12	11	180	9				
E12M-SCLCR/L-09	15	12	11	150	8				
E12Q-SCLCR/L-09	15	12	11	180	8				
E16R-SCLCR/L-09	20	16	15	200	11	CC□T1204□□	FTGA0411F	TW15P	2
E16S-SCLCR/L-09	20	16	15	250	11				
E20R-SCLCR/L-09	25	20	18	200	13				
E20S-SCLCR/L-09	25	20	19	250	13				
E25T-SCLCR/L-12	32	25	23	300	17				

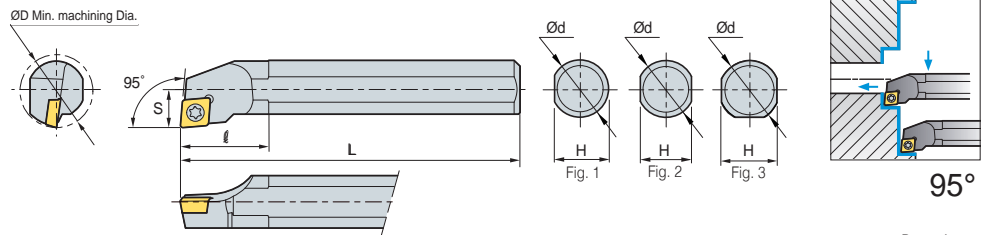
➔ Applicable inserts B73~B77, B103



SCLPR/L



CP□T



• R type insert (mm)

Steel shank type

Designation	ØD	Ød	H	L	S	ℓ	Insert	Screw	Wrench	Fig.
S10M-SCLPR/L-08	13	10	9	150	7	16	CP□T0802□□	FTNA0305	TW09P	2
S12M-SCLPR/L-08	16	12	11	150	9	20		FTNA0307	TW09P	
S16N-SCLPR/L-09	20	16	14	160	11	25	CP□T0903□□	FTNA0408	TW15P	2
S16R-SCLPR/L-09	20	16	14	200	11	25				
S20N-SCLPR/L-09	25	20	18	160	13	32				
S20S-SCLPR/L-09	25	20	18	250	13	32				3
A10H-SCLPR/L-08	12	10	9.65	100	6	-	CP□T0802□□	FTNA0305	TW09P	1
A12K-SCLPR/L-08	16	12	11.5	125	9	20		FTNA0307	TW09P	
A16M-SCLPR/L-09	20	16	15.5	150	10	25	CP□T0903□□	FTNA0408	TW15P	1
A20Q-SCLPR/L-09	25	20	19	180	13	32				3

Carbide shank type

Designation	ØD	Ød	H	L	S	ℓ	Insert	Screw	Wrench	Fig.		
C10K-SCLPR/L-08	12	10	9	125	6	14.5	CP□T0802□□	FTNA0305	TW09P	2		
C10M-SCLPR/L-08	12	10	9	150	6	14.5		FTNA0306	TW09P			
C12M-SCLPR/L-08	15	12	11	150	7.5	14.7						
C12Q-SCLPR/L-08	15	12	11	180	7.5	14.7						
C12M-SCLPR/L-09	15	12	11	150	8	14.4	CP□T0903□□	FTNA0408	TW15P	2		
C12Q-SCLPR/L-09	15	12	11	180	8	14.4						
C16R-SCLPR/L-09	20	16	15	200	10	22.4						
C16S-SCLPR/L-09	20	16	15	250	10	22.4						
C20R-SCLPR/L-09	25	20	18	200	13	22.5	CP□T0802□□	FTNA0305	TW09P	2		
C20S-SCLPR/L-09	25	20	18	250	13	22.5						
E10K-SCLPR/L-08	12	10	9	125	6	14.5						
E10M-SCLPR/L-08	12	10	9	150	6	14.5						
E12M-SCLPR/L-08	15	12	11	150	7.5	14.7	CP□T0802□□	FTNA0407	TW09P	2		
E12Q-SCLPR/L-08	15	12	11	180	7.5	14.7						
E12M-SCLPR/L-09	15	12	11	150	8	14.4	CP□T0903□□	FTNA0408	TW15P	2		
E12Q-SCLPR/L-09	15	12	11	180	8	14.4						
E16R-SCLPR/L-09	20	16	15	200	10	22.4						
E16S-SCLPR/L-09	20	16	15	250	10	22.4						
E20R-SCLPR/L-09	25	20	18	200	13	22.5						
E20S-SCLPR/L-09	25	20	18	250	13	22.5						

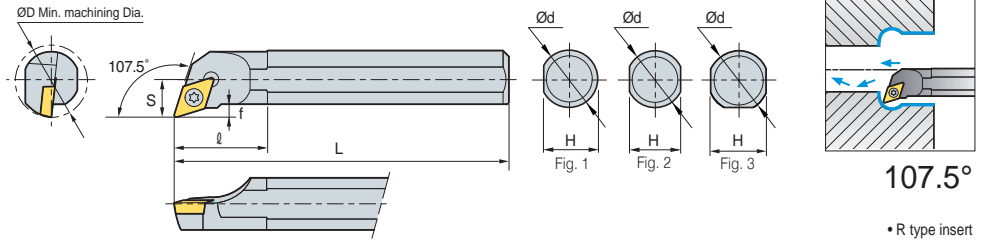
Applicable inserts B78



SDQCR/L



DC□T



Steel shank type

* R type insert (mm)

Designation	ØD	Ød	H	L	S	l	Insert	Screw	Wrench	Fig.
S10M-SDQCR/L-07	13	10	9	150	7	16	DC□T0702□□	FTKA02555	TW07P	2
S12M-SDQCR/L-07	16	12	11	150	9	20		FTKA02565	TW07P	
S16R-SDQCR/L-07	20	16	14	200	11	25				
S16R-SDQCR/L-11	20	16	14	200	11	25	DC□T11T3□□	FTGA03508	TW15P	2
S20S-SDQCR/L-11	25	20	18	250	13	32		FTGA03510	TW15P	
S25R-SDQCR/L-11	32	25	23	200	17	40				
A10H-SDQCR/L-07	13	10	9.5	100	7	16	DC□T0702□□	FTKA02555	TW07P	1
A12K-SDQCR/L-07	16	12	11.5	125	9	20		FTKA02565	TW07P	1
A16M-SDQCR/L-11	20	16	15	150	11	25	DC□T11T3□□	FTGA03508	TW15P	1
A20Q-SDQCR/L-11	25	20	19	180	13	32				
A25R-SDQCR/L-11	32	25	24	200	17	40		FTGA03510	TW15P	

Carbide shank type

(mm)

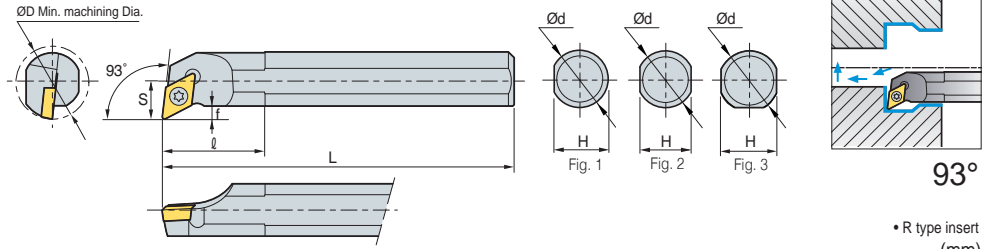
Designation	ØD	Ød	H	L	S	l	Insert	Screw	Wrench	Fig.
C08K-SDQCR/L-07	11	8	7	125	6	-	DC□T0702□□	FTKA02555	TW07P	2
C10K-SDQCR/L-07	13	10	9	125	7	14.0		FTKA02565	TW07P	
C12M-SDQCR/L-07	16	12	11	150	9	14.0				
C16R-SDQCR/L-07	20	16	15	200	11	-				
C16R-SDQCR/L-11	20	16	15	200	11	21.3	DC□T11T3□□	FTGA03508	TW15P	2
C20R-SDQCR/L-11	25	20	18	200	13	24.0				
C20S-SDQCR/L-11	25	20	18	250	13	24.0				
E08K-SDQCR/L-07	11	8	7	125	6	-	DC□T0702□□	FTKA02555	TW07P	2
E10K-SDQCR/L-07	13	10	9	125	7	14.0		FTKA02565	TW07P	
E12M-SDQCR/L-07	16	12	11	150	9	14.0				
E16R-SDQCR/L-07	20	16	15	200	11	-				
E16R-SDQCR/L-11	20	16	15	200	11	21.3	DC□T11T3□□	FTGA03508	TW15P	2
E20R-SDQCR/L-11	25	20	18	200	13	24.0				
E20S-SDQCR/L-11	25	20	19	250	13	24.0				

Applicable inserts B79-B82, B103

SDUCR/L



DC□T



Steel shank type

Designation	ØD	Ød	H	L	S	ℓ	Insert	Screw	Wrench	Fig.
S10M-SDUCR/L-07	13	10	9	150	7	16	DC□T0702□□	FTKA02555	TW07P	2
S12M-SDUCR/L-07	16	12	11	150	9	20		FTKA02565	TW07P	2
S16R-SDUCR/L-07	20	16	14	200	11	25		DC□T11T3□□	FTGA03508	TW15P
S16R-SDUCR/L-11	20	16	14	200	11	25	FTGA03510		TW15P	3
S20S-SDUCR/L-11	25	20	18	250	13	32	DC□T11T3□□		FTKA02555	TW07P
S25R-SDUCR/L-11	32	25	23	200	17	40		FTKA02565	TW07P	1
S32S-SDUCR/L-11	40	32	30	250	22	50		FTGA03508	TW15P	1
A10H-SDUCR/L-07	13	10	9.5	100	7	16	DC□T11T3□□	FTGA03510	TW15P	1
A12K-SDUCR/L-07	16	12	11.5	125	9	20		FTGA03510	TW15P	1
A16M-SDUCR/L-07	20	16	15	150	11	25				
A20Q-SDUCR/L-11	25	20	19	180	13	32				
A25R-SDUCR/L-11	32	25	24	200	17	40				

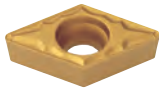
Carbide shank type

Designation	ØD	Ød	H	L	S	ℓ	Insert	Screw	Wrench	Fig.
C10K-SDUCR/L-07	13	10	9	125	7	9.8	DC□T0702□□	FTKA02555	TW07P	2
C10M-SDUCR/L-07	13	10	9	150	7	9.8		FTKA02565	TW07P	
C12M-SDUCR/L-07	16	12	11	150	9	11.0		DC□T11T3□□	FTGA03508	
C12Q-SDUCR/L-07	16	12	11	180	9	11.0	FTGA03510		TW15P	
C16R-SDUCR/L-07	20	16	15	200	11	-	DC□T0702□□		FTKA02555	TW07P
C16S-SDUCR/L-07	20	16	15	250	11	-		FTKA02565	TW07P	
C16R-SDUCR/L-11	20	16	15	200	11	-		DC□T11T3□□	FTGA03508	TW15P
C16S-SDUCR/L-11	20	16	15	250	11	-	FTGA03510		TW15P	
C20R-SDUCR/L-11	25	20	18	200	13	-	DC□T0702□□		FTKA02555	TW07P
C20S-SDUCR/L-11	25	20	18	250	13	-		FTKA02565	TW07P	
C25T-SDUCR/L-11	32	25	23	300	17	-		DC□T11T3□□	FTGA03508	TW15P
E10K-SDUCR/L-07	13	10	9	125	7	9.8	FTGA03510		TW15P	
E10M-SDUCR/L-07	13	10	9	150	7	9.8	DC□T0702□□		FTKA02555	TW07P
E12M-SDUCR/L-07	16	12	11	150	9	11.0		FTKA02565	TW07P	
E12Q-SDUCR/L-07	16	12	11	180	9	11.0		DC□T11T3□□	FTGA03508	TW15P
E16R-SDUCR/L-07	20	16	15	200	11	-	FTGA03510		TW15P	
E16S-SDUCR/L-07	20	16	15	250	11	-	DC□T0702□□		FTKA02555	TW07P
E16R-SDUCR/L-11	20	16	15	200	11	-		FTKA02565	TW07P	
E16S-SDUCR/L-11	20	16	15	250	11	-		DC□T11T3□□	FTGA03508	TW15P
E20R-SDUCR/L-11	25	20	18	200	13	-	FTGA03510		TW15P	
E20S-SDUCR/L-11	25	20	18	250	13	-	DC□T0702□□		FTKA02555	TW07P
E25T-SDUCR/L-11	32	25	23	300	17	-		FTKA02565	TW07P	

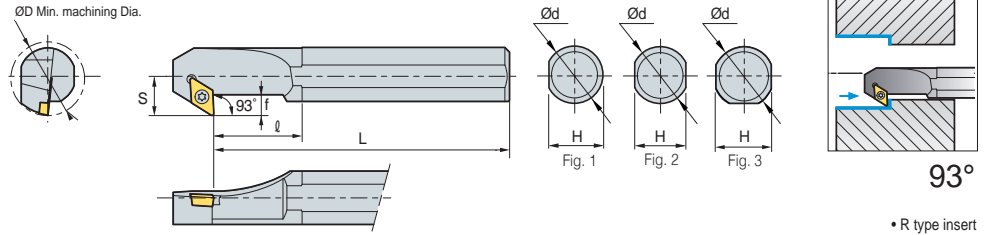
Applicable inserts B79-B82, B104



SDZCR/L



DC□T



• R type insert (mm)

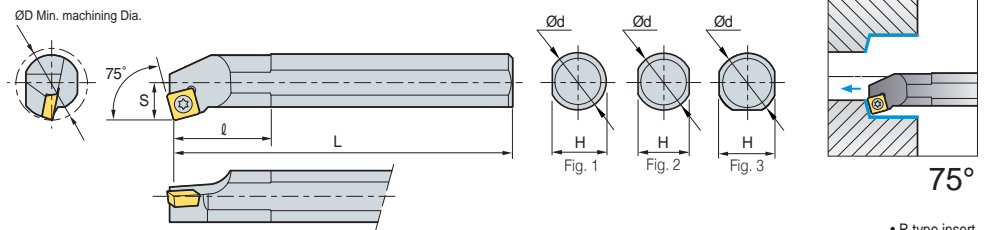
Designation	ØD	Ød	H	L	S	ℓ	f	Insert	Screw	Shim	Shim Screw	Wrench	Fig.
S16R-SDZCR/L-07	20	16	14	200	11	25	6.5	DC□T0702□□	FTKA02565	-	-	TW07P	2
S20S-SDZCR/L-07	25	20	18	250	13	32	7.5						
S25R-SDZCR/L-11	32	25	23	200	17	40	9	DC□T11T3□□	FTGA03510	-	-	TW15P	3
S32S-SDZCR/L-11	40	32	30	250	22	50	11		FTGA03512	SD32S	SHXN0509F	TW15P, HW35L	
S40T-SDZCR/L-11	50	40	38	300	27	60	11		FTGA03510	-	-	TW15P	1
A25R-SDZCR/L-11	32	25	24	200	17	40	9		FTGA03512	SD32S	SHXN0509F	TW15P, HW35L	3
A32S-SDZCR/L-11	40	32	30	250	22	50	11						

↻ Applicable inserts B79~B82, B104

SSKCR/L



SC□T



• R type insert (mm)

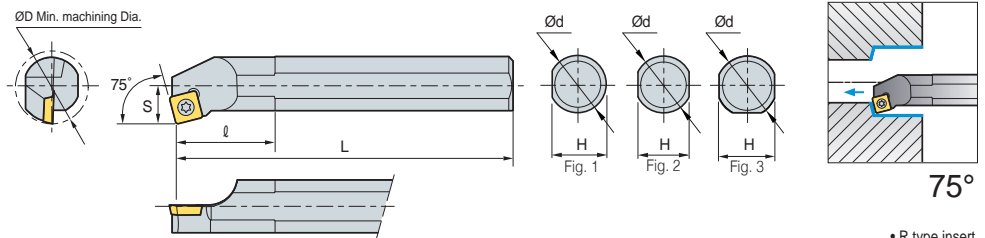
Designation	ØD	Ød	H	L	S	ℓ	Insert	Screw	Shim	Shim Screw	Wrench	Fig.
S12M-SSKCR/L-09	16	12	11	150	9	20	SC□T09T3□□	FTGA03507	-	-	TW15P	2
S16R-SSKCR/L-09	20	16	14	200	11	25		FTGA03508	-	-	TW15P	
S20S-SSKCR/L-09	25	20	18	250	13	32	SC□T1204□□	FTGA0411F	-	-	TW15P	3
S25R-SSKCR/L-12	32	25	23	200	17	40		FTGA0411F	SS42S	SHXN0610F	TW15P, HW40L	
S32S-SSKCR/L-12	40	32	30	250	22	50						
A12K-SSKCR/L-09	16	12	11.5	125	9	20	SC□T09T3□□	FTGA03507	-	-	TW15P	1
A16M-SSKCR/L-09	20	16	15	150	11	25		FTGA03508	-	-	TW15P	
A20Q-SSKCR/L-09	25	20	19	180	13	32	SC□T1204□□	FTGA0411F	-	-	TW15P	3
A25R-SSKCR/L-12	32	25	24	200	17	40		FTGA0411F	SS42S	SFXN0610F	TW15P, HW40L	
A32S-SSKCR/L-12	40	32	30	250	22	50						

↻ Applicable inserts B84, B106

SSKPR/L



SP□T



• R type insert (mm)

Designation	ØD	Ød	H	L	S	ℓ	Insert	Screw	Wrench	Fig.
S12M-SSKPR/L-09	16	12	11	150	9	20	SP□T09T3□□	FTNA0307	TW09P	2
S16N-SSKPR/L-09	20	16	14	160	11	25				
S16R-SSKPR/L-09	20	16	14	200	11	25				
S20N-SSKPR/L-09	25	20	18	160	13	32				
S20S-SSKPR/L-09	25	20	18	250	13	32				
A12K-SSKPR/L-09	16	12	11.5	125	9	20	SP□T09T3□□	FTNA0307	TW09P	1
A16M-SSKPR/L-09	20	16	15	150	11	25				
A20Q-SSKPR/L-09	25	20	19	180	13	32				

↻ Applicable inserts B85~B86

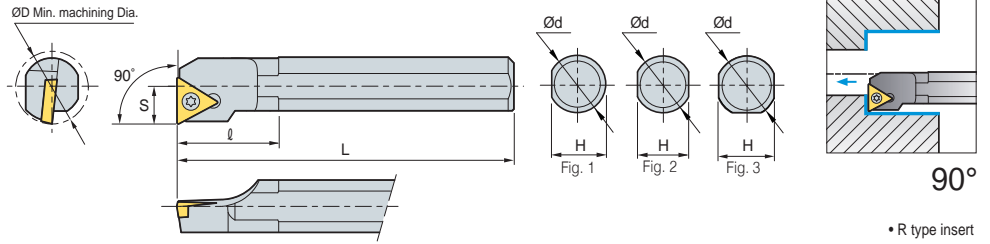
• Use left handed insert for right handed holder



STFCR/L



TC□T



• R type insert (mm)

Steel shank type

Designation	ØD	Ød	H	L	S	ℓ	Insert	Screw	Shim	Shim Screw	Wrench	Fig.
S10M-STFCR/L-09	13	10	9	150	7	16	TC□T0902□□	FTKA02206	-	-	TW06P	2
S12M-STFCR/L-09	16	12	11	150	9	20						
S12M-STFCR/L-11	16	12	11	150	9	20						
S16R-STFCR/L-11	20	16	14	200	11	25	TC□T1102□□	FTKA02565	-	-	TW07P	2
S20S-STFCR/L-11	25	20	18	250	13	32						
S20S-STFCR/L-16	25	20	18	250	13	32	TC□T16T3□□	FTGA03510	-	-	TW15P	2
S25R-STFCR/L-16	32	25	23	200	17	40						3
S32S-STFCR/L-16	40	32	30	250	22	50	TC□T16T3□□	FTGA03512	ST32S	SHXN0509F	TW15P, HW35L	3
S40T-STFCR/L-16	50	40	38	300	27	60						
A10H-STFCR/L-09	13	10	9.5	100	7	16	TC□T0902□□	FTKA02206	-	-	TW06P	1
A12K-STFCR/L-09	16	12	11.5	125	9	20						
A12K-STFCR/L-11	16	12	11.5	125	9	20						
A16M-STFCR/L-11	20	16	15	150	11	25	TC□T1102□□	FTKA02565	-	-	TW07P	1
A20Q-STFCR/L-11	25	20	19	180	13	32						
A25R-STFCR/L-16	32	25	24	200	17	40	TC□T16T3□□	FTKA03510	-	-	TW15P	1
A32S-STFCR/L-16	40	32	30	250	22	50						

Carbide shank type

Designation	ØD	Ød	H	L	S	ℓ	Insert	Screw	Wrench	Fig.
C08K-STFCR/L-09	10	8	7	125	5	-	TC□T0902□□	FTKA02206	TW06P	2
C10K-STFCR/L-09	12	10	9	125	6	14.0				
C10K-STFCR/L-11	12	10	9	125	6	12.5				
C12M-STFCR/L-11	15	12	11	150	8	-	TC□T1102□□	FTKA02565	TW07P	2
C16R-STFCR/L-11	20	16	15	200	10	-				
C20R-STFCR/L-11	25	20	18	200	13	23.0				
C20S-STFCR/L-11	25	20	18	250	13	23.0				
C20R-STFCR/L-16	25	20	18	200	13	-	TC□T16T3□□	FTGA03510	TW15P	2
C20S-STFCR/L-16	25	20	18	250	13	-				
E08K-STFCR/L-09	10	8	7	125	5	-	TC□T0902□□	FTKA02206	TW06P	2
E10K-STFCR/L-09	12	10	9	125	6	14.0				
E10K-STFCR/L-11	12	10	9	125	6	12.5				
E12M-STFCR/L-11	15	12	11	150	8	-	TC□T1102□□	FTKA02565	TW07P	2
E16R-STFCR/L-11	20	16	15	200	11	-				
E20R-STFCR/L-11	25	20	18	200	13	23.0				
E20S-STFCR/L-11	25	20	18	250	13	23.0				
E20R-STFCR/L-16	25	20	18	200	13	-	TC□T16T3□□	FTGA03510	TW15P	2
E20S-STFCR/L-16	25	20	19	250	13	-				

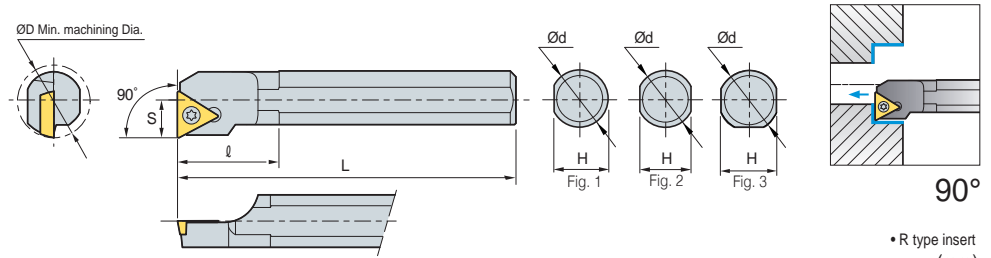
Applicable inserts B88-B89, B107



STFPR/L



TP□T



• R type insert (mm)

Steel shank type

Designation	ØD	Ød	H	L	S	l	Insert	Screw	Wrench	Fig.
S10M-STFPR/L-11	13	10	9	150	7	16	TP□T1103□□	FTNA0306	TW09P	2
S12M-STFPR/L-11	16	12	11	150	9	20		FTNA0307	TW09P	2
S16N-STFPR/L-11	20	16	14	160	11	25				
S16R-STFPR/L-11	20	16	14	200	11	25				
S20N-STFPR/L-16	25	20	18	160	13	32	TP□T1604□□	FTNA0408	TW15P	2
S20S-STFPR/L-16	25	20	18	250	13	32				
A10H-STFPR/L-11	13	10	9.5	100	7	16	TP□T1103□□	FTNA0306	TW09P	1
A12K-STFPR/L-11	16	12	11	125	9	20		FTNA0307	TW09P	1
A16M-STFPR/L-11	20	16	15	150	11	25				
A20Q-STFPR/L-16	25	20	19	180	13	32	TP□T1604□□	FTNA0408	TW15P	1

Carbide shank type

Designation	ØD	Ød	H	L	S	l	Insert	Screw	Wrench	Fig.
C08K-STFPR/L-08	10	8	7	125	5	13.7	TP□T1103□□	FTNA02205	TW06P	2
C10K-STFPR/L-11	12	10	9	125	6	14.0		FTNA0305	TW09P	
C10M-STFPR/L-11	12	10	9	150	6	14.0				
C12M-STFPR/L-11	15	12	11	150	8	-				
C12Q-STFPR/L-11	15	12	11	180	8	-				
C16R-STFPR/L-11	20	16	15	200	10	-				
C16S-STFPR/L-11	20	16	15	250	10	-				
C20R-STFPR/L-11	25	20	18	200	13	-				
C20S-STFPR/L-11	25	20	18	250	13	-				
C20R-STFPR/L-16	25	20	18	200	13	-				
C20S-STFPR/L-16	25	20	18	250	13	-	TP□T1604□□	FTNA0408	TW15P	
C25T-STFPR/L-16	32	25	23	300	17	23.5				
E08K-STFPR/L-08	10	8	7	125	5	13.7	TP□T0802□□	FTNA02205	TW06P	2
E10K-STFPR/L-11	12	10	9	125	6	14.0	TP□T1103□□	FTNA0305	TW09P	
E10M-STFPR/L-11	12	10	9	150	6	14.0				
E12M-STFPR/L-11	15	12	11	150	8	-				
E12Q-STFPR/L-11	15	12	11	180	8	-				
E16R-STFPR/L-11	20	16	15	200	10	-				
E16S-STFPR/L-11	20	16	15	250	10	-				
E20R-STFPR/L-11	25	20	18	200	13	-				
E20S-STFPR/L-11	25	20	18	250	13	-				
E20R-STFPR/L-16	25	20	18	200	13	-				
E20S-STFPR/L-16	25	20	18	250	13	-	TP□T1604□□	FTNA0408	TW15P	
E25T-STFPR/L-16	32	25	23	300	17	23.5				

Applicable inserts **B90~B93**

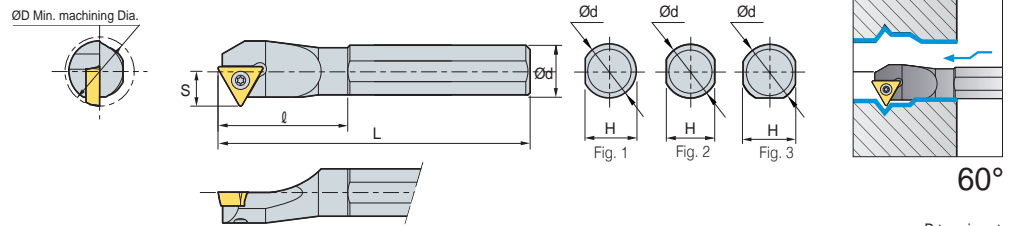
• Use left handed insert for right handed holder



STWPR/L



TP□□



• R type insert (mm)

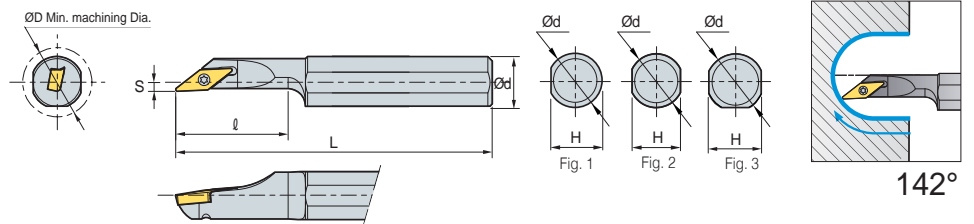
Designation	ØD	Ød	H	L	S	ℓ	Insert	Screw	Wrench	Fig.
S10M-STWPR/L-11	13	10	7	150	7	16	TPGH1102□□	FTNA0305	TW09P	2
S12M-STWPR/L-11	16	12	9	150	9	20	TPGH1103□□ TPMT1103□□	FTNA0306	TW09P	
S16Q-STWPR/L-11	20	16	14	180	11	25				
S20R-STWPR/L-11	25	20	18	200	13	32				

➔ Applicable inserts B90-B93

SVJCR/L



VC□□



• R type insert (mm)

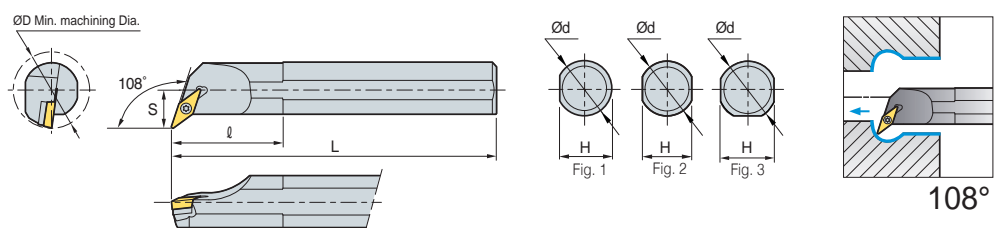
Designation	ØD	Ød	H	L	S	ℓ	Insert	Screw	Wrench	Fig.
S12M-SVJCR/L-08	16	12	11	150	2	26	VCMT0802□□	FTNA0204	TW06P	2
S16Q-SVJCR/L-08	20	16	15	180	2	36				

➔ Applicable inserts B97-B99, B109

SVQBR/L



VB□T



• R type insert (mm)

Designation	ØD	Ød	H	L	S	ℓ	Insert	Screw	Shim	Shim Screw	Wrench	Fig.
S32S-SVQBR/L-16	40	32	30	250	22	50	VB□T1604□□	FTGA03512	SV32S	SHXN0509F	TW15P HW35L	3
S40T-SVQBR/L-16	50	40	38	300	27	60						
A32S-SVQBR/L-16	40	32	30	250	22	50						

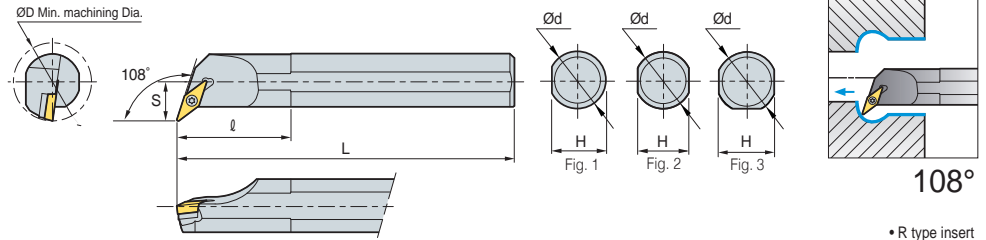
➔ Applicable inserts B94-B96, B108



SVQCR/L



VC□T



* R type insert (mm)

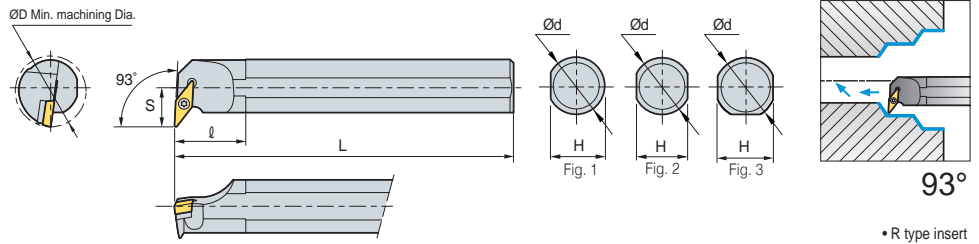
Designation	ØD	Ød	H	L	S	ℓ	Insert	Screw	Shim	Shim Screw	Wrench	Fig.
S16R-SVQCR/L-11	20	16	14	200	11	25	VC□T1103□□	FTKA02565	-	-	TW07P	2
S20S-SVQCR/L-11	25	20	18	250	13	32						3
S25R-SVQCR/L-11	32	25	23	200	17	40	VC□T1303□□	FTKA0307	-	-	TW07P	2
S20S-SVQCR/L-13	25	20	18	250	13	32						3
S25R-SVQCR/L-13	32	25	23	200	17	40	VC□T1604□□	FTGA03510	-	-	TW15P	3
S25R-SVQCR/L-16	32	25	23	200	17	40		FTGA03512	SV32S	SHXN0509F	TW15P HW35L	
S32S-SVQCR/L-16	40	32	30	250	22	50						
S40T-SVQCR/L-16	50	40	38	300	27	60						

↻ Applicable inserts B97~B99, B109

SVUBR/L



VB□T



* R type insert (mm)

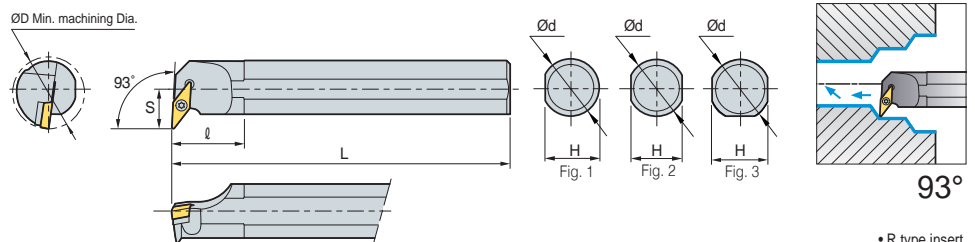
Designation	ØD	Ød	H	L	S	ℓ	Insert	Screw	Shim	Shim Screw	Wrench	Fig.
S32S-SVUBR/L-16	40	32	30	250	22	50	VB□T1604□□	FTGA03512	SV32S	SHXN0509F	TW15P HW35L	3
S40T-SVUBR/L-16	50	40	38	300	27	60						
A32S-SVUBR/L-16	40	32	30	250	22	50						

↻ Applicable inserts B94~B96, B108

SVUCR/L



VC□T



* R type insert (mm)

Designation	ØD	Ød	H	L	S	ℓ	Insert	Screw	Shim	Shim Screw	Wrench	Fig.
S16R-SVUCR/L-11	22	16	14	200	13	25	VC□T1103□□	FTKA02565	-	-	TW07P	2
S20S-SVUCR/L-11	25	20	18	250	13	32						3
S25T-SVUCR/L-11	32	25	23	300	17	40	VC□T1303□□	FTKA0307	-	-	TW09P	2
S20S-SVUCR/L-13	25	20	18	250	13	32						3
S25R-SVUCR/L-13	32	25	23	200	17	40	VC□T1604□□	FTGA03510	-	-	TW15P	3
S25R-SVUCR/L-16	32	25	23	200	17	40		FTGA03512	SV32S	SHXN0509F	TW15P HW35L	
S32S-SVUCR/L-16	40	32	30	250	22	50						
S40T-SVUCR/L-16	50	40	38	300	27	60						

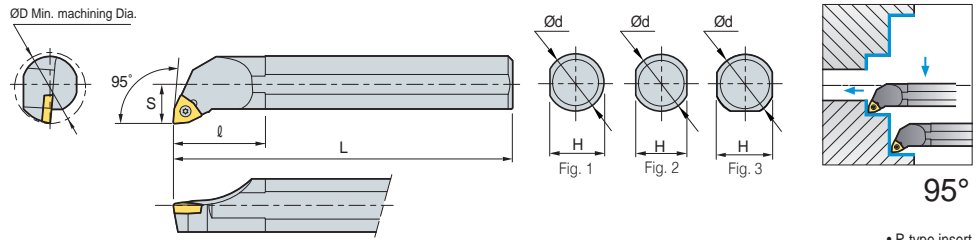
↻ Applicable inserts B97~B99, B109

B Screw on System

SWLCR/L



WC□T

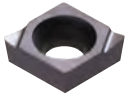


• R type insert (mm)

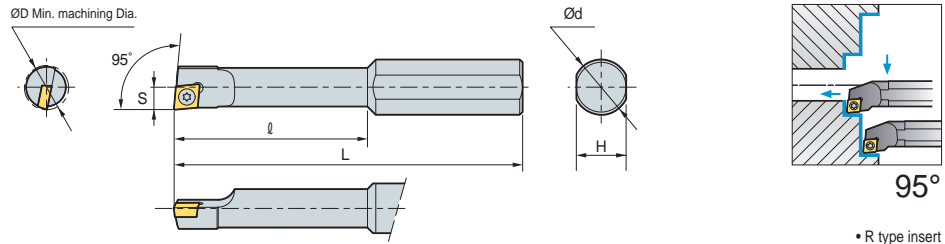
Designation	ØD	Ød	H	L	S	ℓ	Insert	Screw	Wrench	Fig.
S25R-SWLCR/L-08	32	25	23	200	17	40	WC□T0804□□	FTGA0411F	TW15P	3
S32S-SWLCR/L-08	40	32	30	250	22	50				
A25R-SWLCR/L-08	32	25	24	200	17	40	WC□T0804□□	FTGA0411F	TW15P	1
A32S-SWLCR/L-08	40	32	30	250	22	50				3



SCLCR/L



CCET



Designation	ØD	Ød	H	L	S	ℓ	Insert	Screw	Wrench
S10H-SCLCR/L-0305	5	10	9	100	2.5	25	CCET0301□□	FTNA01633	TW06P
S10H-SCLCR/L-0306	6	10	9	100	3.0	25			
S10J-SCLCR/L-0407	7	10	9	110	3.5	30	CCET0401□□	FTNA0238	TW06P
S10J-SCLCR/L-0408	8	10	9	110	4.0	30			

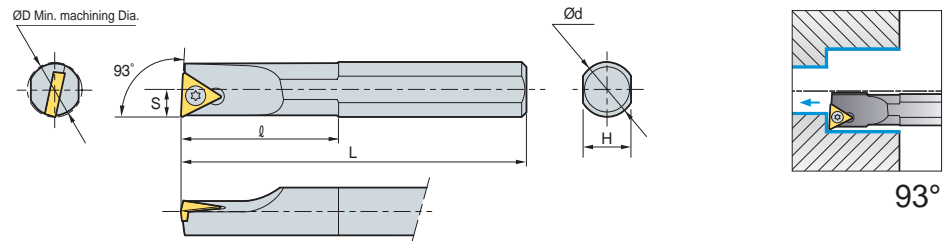
➔ Applicable inserts B73 ~B77, B103

• Use left handed insert for right handed holder

STUBR/L



TB□□



➔ Steel shank type

Designation	ØD	Ød	H	L	S	ℓ	Insert	Screw	Wrench
S08K-STUBR/L-06	8	8	7	125	4	30	TB□□0601□□R/L	FTNA0204	TW06P
A08F-STUBR/L-06	8	8	7.5	80	4	30			

➔ Carbide shank type

Designation	ØD	Ød	H	L	S	ℓ	Insert	Screw	Wrench
C08K-STUBR/L-06	10	8	7	125	5		TB□T0601□□	FTNA0204	TW06P
C10K-STUBR/L-06	12	10	9	125	6				
E08K-STUBR/L-06	10	8	7	125	5		TB□T0601□□	FTNA0204	TW06P
E10K-STUBR/L-06	12	10	9	125	6				

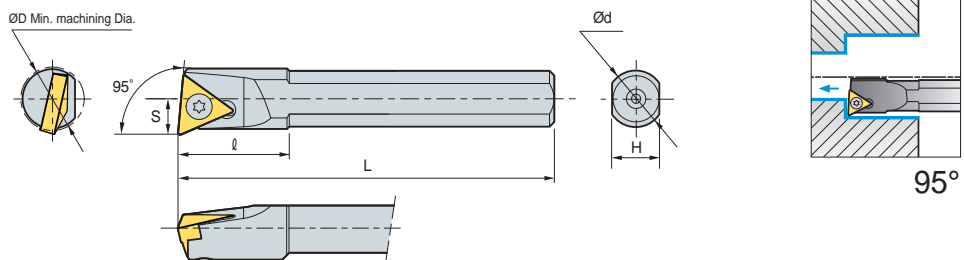
➔ Applicable inserts B87

• Use left handed insert for right handed holder

STLBR/L



TB□□



➔ Steel shank type

Designation	ØD	Ød	H	L	S	ℓ	Insert	Screw	Wrench
S06H-STLBR/L-06-SP	8	6	5	100	3.8	12	TB□□0601□□R/L	FTNA0204	TW06P

➔ Applicable inserts B87

• Use left handed insert for right handed holder

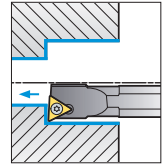
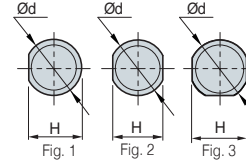
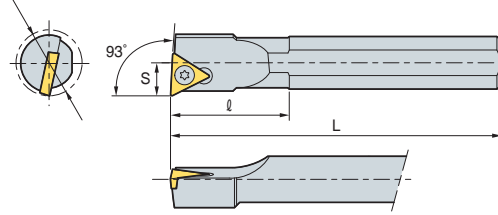


STUPR/L



TP□□

ØD Min. machining Dia.



93°

Steel shank type

• R type insert (mm)

Designation	ØD	Ød	H	L	S	ℓ	Insert	Screw	Wrench	Fig.
S08K-STUPR/L-08	10	8	7	125	4	18	TP□□0802□□R/L	FTNA02205	TW06P	2
A08F-STUPR/L-08	10	8	7.5	80	5	18				

Carbide shank type

(mm)

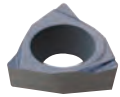
Designation	ØD	Ød	H	L	S	ℓ	Insert	Screw	Wrench	Fig.
C08K-STUPR/L-08	10	8	7	125	5		TP□T0802□□	FTNA02205	TW06P	2
C10K-STUPR/L-11	12	10	9	125	6		TP□T1103□□	FTNA0305	TW09P	
C10M-STUPR/L-11	12	10	9	150	6					
C12M-STUPR/L-11	15	12	11	150	8					
C12Q-STUPR/L-11	15	12	11	180	8					
C16R-STUPR/L-11	20	16	15	200	10					
C16S-STUPR/L-11	20	16	15	250	10					
C20R-STUPR/L-11	25	20	18	200	13					
C20S-STUPR/L-11	25	20	18	250	13					
C20R-STUPR/L-16	25	20	18	200	13					
C20S-STUPR/L-16	25	20	18	250	13		TP□T1604□□	FTNA0408	TW15P	
C25T-STUPR/L-16	32	25	23	300	17					
E08K-STUPR/L-08	10	8	7	125	5		TP□T0802□□	FTNA02205	TW06P	2
E10K-STUPR/L-11	12	10	9	125	6		TP□T1103□□	FTNA0305	TW09P	
E10M-STUPR/L-11	12	10	9	150	6					
E12M-STUPR/L-11	15	12	11	150	8					
E12Q-STUPR/L-11	15	12	11	180	8					
E16R-STUPR/L-11	20	16	15	200	10					
E16S-STUPR/L-11	20	16	15	250	10					
E20R-STUPR/L-11	25	20	18	200	13					
E20S-STUPR/L-11	25	20	18	250	13					
E20R-STUPR/L-16	25	20	18	200	13					
E20S-STUPR/L-16	25	20	18	250	13		TP□T1604□□	FTNA0408	TW15P	
E25T-STUPR/L-16	32	25	23	300	17					

Applicable inserts B90-B93

• Use left handed insert for right handed holder

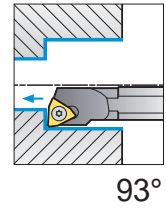
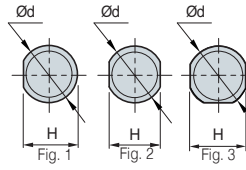
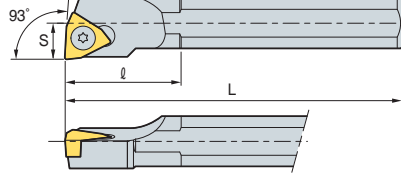


SWUBR/L



WB□T

∅D Min. machining Dia.



93°

Steel shank type

• R type insert (mm)

Designation	∅D	∅d	H	L	S	ℓ	Insert	Screw	Wrench	Fig.
S05H-SWUBR/L-02	5.5	5	4.5	100	2.75	-	WBGTO201□□R/L	FTNA0203	TW06P	2
S08K-SWUBR/L-02	8	8	7	125	4	30		FTNA02033		
S08K-SWUBR/L-S3	10	8	7	125	5	18	WBGTS302□□R/L	FTNA02205		
A08F-SWUBR/L-02	8	8	7.5	80	4	30	WBGTO201□□R/L	FTNA0203		
A08F-SWUBR/L-S3	10	8	7.5	80	5	16	WBGTS302□□R/L	FTNA02205		

Carbide shank type

(mm)

Designation	∅D	∅d	H	L	S	ℓ	Insert	Screw	Wrench	Fig.
C05H-SWUBR/L-02	6	5	4.4	100	3	-	WB□T0201□□	FTNA0203	TW06P	1
C06H-SWUBR/L-02	7	6	5.4	100	3.5	-		FTNA02033		
C08K-SWUBR/L-02	9	8	7	125	4.5	-	WB□TS301□□	FTNA02205	TW06P	2
C08K-SWUBR/L-S3	10	8	7	125	4.5	-		FTNA02205		
E06H-SWUBR/L-02	7	6	5.4	100	3.5	-	WB□T0201□□	FTNA0203	TW06P	1
E08K-SWUBR/L-02	9	8	7	125	4.5	-		FTNA02033		
E08K-SWUBR/L-S3	10	8	7	125	5	-	WB□TS301□□	FTNA02205	TW06P	2

↻ Applicable inserts **B101**

• Use left handed insert for right handed holder



※ See page B151 for applicable sleeves

