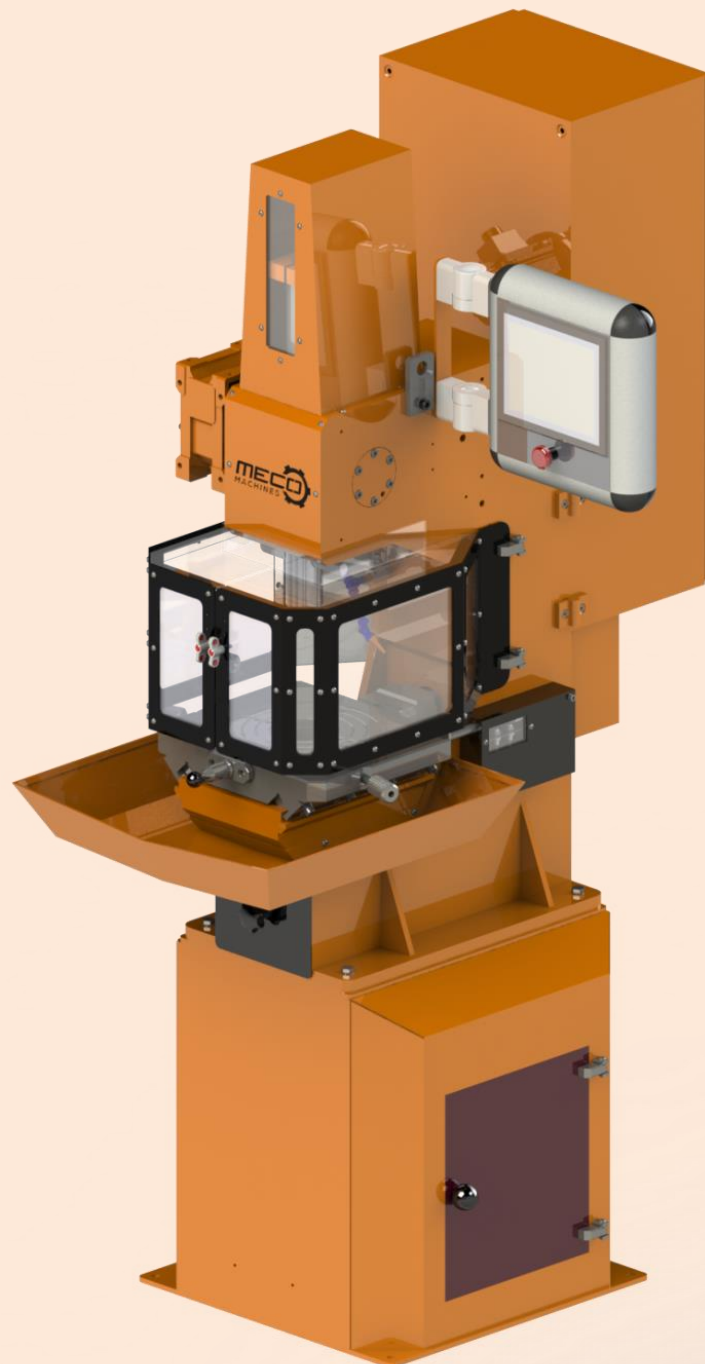


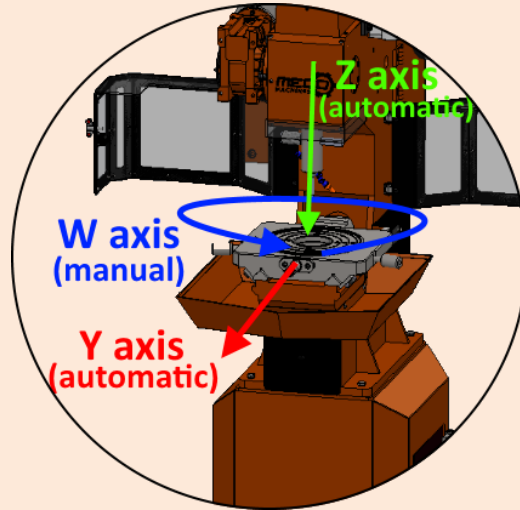


Keyesater Technical Features
MEC-55x275x400 AUTOMATIC

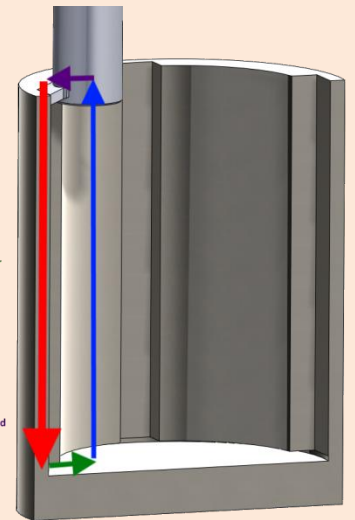




MEC-55x275x400 AUTOMATIC



✓ **2 AUTOMATIC AXES AND 1 MANUAL.** Thanks to the electronic control systems of last generation that have been incorporated in this model for two of its three axes, has achieved greater precision and a higher degree of automation. The machine can work in automatic mode, so that the operator can simply handle replace the part once the machine has finished the process of pre-programmed machining. Undoubtedly, the MECO Keyseaters are designed to increase the production capacity of our customers.

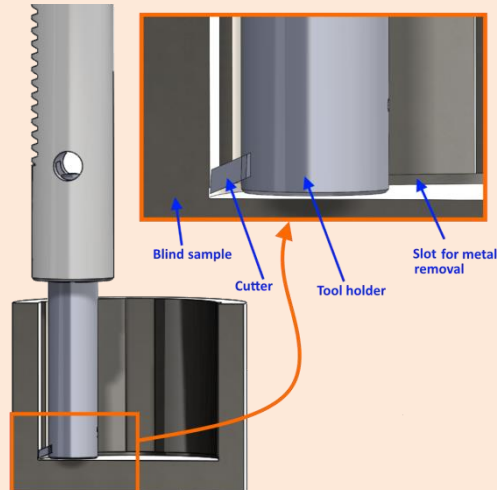


1) Downward stroke:
Cutting is produced during the downward stroke

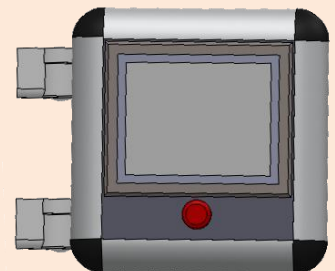
2) Cutter separation:
When the tool finishes the downward stroke, the workpiece is separated from the tool in order to liberate the tool during the upward stroke

3) Upward stroke:
The cutter rise again without any contact with the piece until keep located over the piece.

4) Approaching:
The workpiece moves until the cutter penetrates the programmed cutting depth

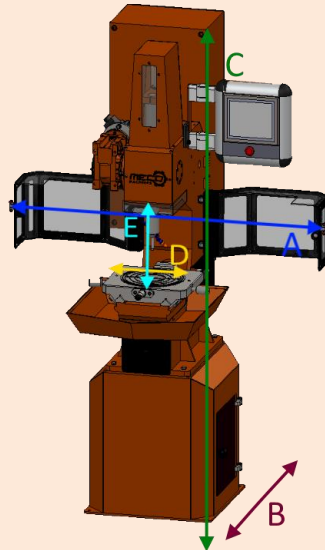


✓ **BLIND SAMPLES.** Properly regulating the limit switches can enter the tool in blind parts and machining grooves or keyways.





MEC-55x275x400 AUTOMATIC

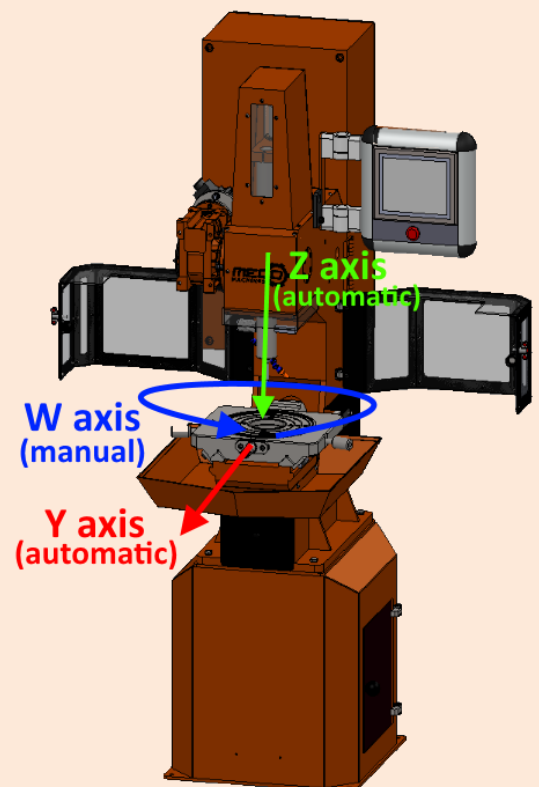


Machine Dimensions

- **A** (Maximum Width with doors open): 1265mm
- **B** (Maximum Depth of the machine): 1100 mm
- **C** (Maximum Higher of the machine): 1860 mm
- **D** (Maximum diameter of the sample): 400 mm
- **E** (Total working area): 220 mm
- Machine weight: 640 kg

Electrical parameters

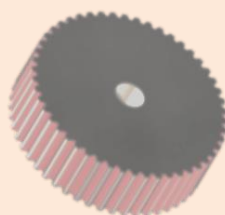
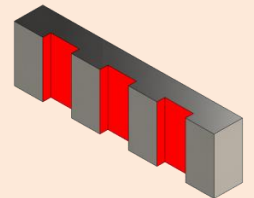
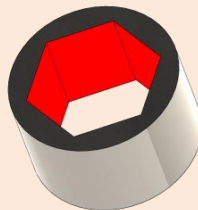
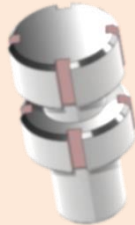
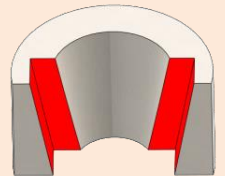
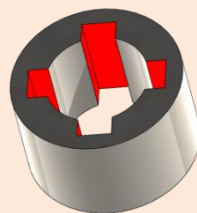
- Apparent power: 5677 VA
- Voltage: 400V
- Frequency: 50Hz.
- Connection: III+N+T



**TECMO
TOOLS**



MEC-55x275x400 AUTOMATIC



**TECMO
TOOLS**



MEC-55x275x400 AUTOMATIC

CUTTERS IN STOCK

At MECO we always have a large stock of standard blades and tool holders.

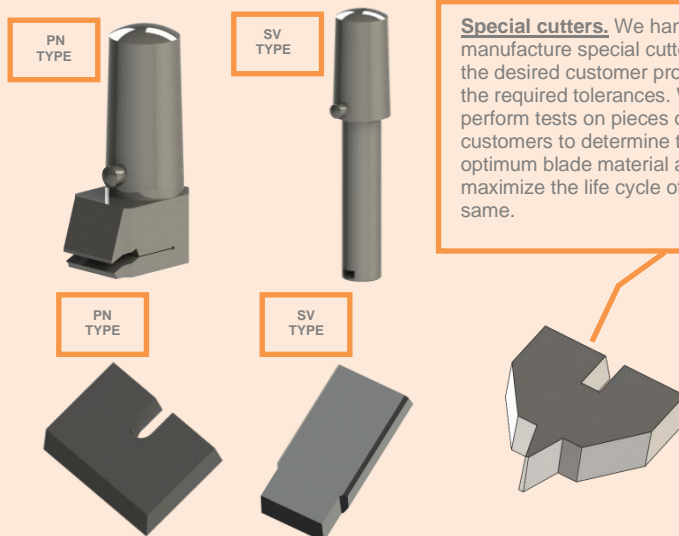
Blades will be delivered within 24 hours in H7 tolerance. Other tolerances or special blades 2-3 weeks.

SPECIAL CUTTERS

From the technical office of MECO we will bring solutions and special customized cutters. We are in charge of manufacturing the cutters with the desired customer profile and the required tolerances. We also conduct studies and tests with different materials to optimize and maximize the life of the tool in special applications.

SUPPLIES

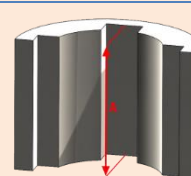
In MECO we guarantee our customers the supply of spare parts for the entire life cycle of the machine.



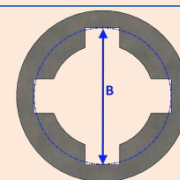
Special cutters. We handle manufacture special cutters with the desired customer profile and the required tolerances. We also perform tests on pieces of customers to determine the optimum blade material and maximize the life cycle of the same.

Geometric limits of standard cutters and toolholders

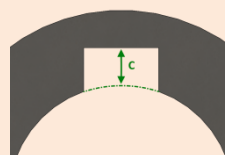
	WIDTH AND KIND OF TOOL (mm)	TOOL HOLDER REQUIRED	A (mm)	B (mm)	C (mm)	D (mm)
MEC-55 CNC SV	3 FLG SV	3mm SV	30	68	2,0	10
	4 FLG SV	4mm SV	35	70	2,5	13
	5 FLG SV	5mm SV	50	71	3,0	14
	6 FLG SV	6mm SV	60	77	4,6	20
	8 FLG SV	8mm SV	90	80	4,6	24
	10 FLG SV	10mm SV	120	86	4,6	31
	12 FLG SV	12mm SV	125	89	4,5	35
	14 FLG SV	14mm SV	125	90	5,3	36
	16 FLR SV	16mm SV	123	93	6,9	38
18 FLR SV	18mm SV	125	93	6,9	40	
MEC-55 CNC PN	18 FLR PN	From 18mm to 28mm PN	200	116	8,8	66
	20 FLR PN		200	116	8,8	66
	22 FLR PN		200	116	9,8	67
	25 FLG PN	From 28mm to 40mm PN	200	116	9,8	67
	28 FLG PN		200	116	11,8	68
	32 FLG PN		200	116	12,8	69
	36 FLG PN	From 40mm to 50mm PN	200	116	13,8	70
	40 FLG PN		200	116	15,8	71
	45 FLG PN		200	116	19,8	73
50 FLG PN		200	116	23,8	75	



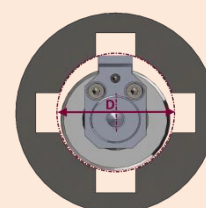
A: Maximum Higher of the Keyway.



B: Reach maximum diameter of the cutter with the sample centered.



C: Maximum Depth of the slot.



D: Minimum diameter of the hole.

*Meco reserves the right to modify the parameters of the preceding table without notice.