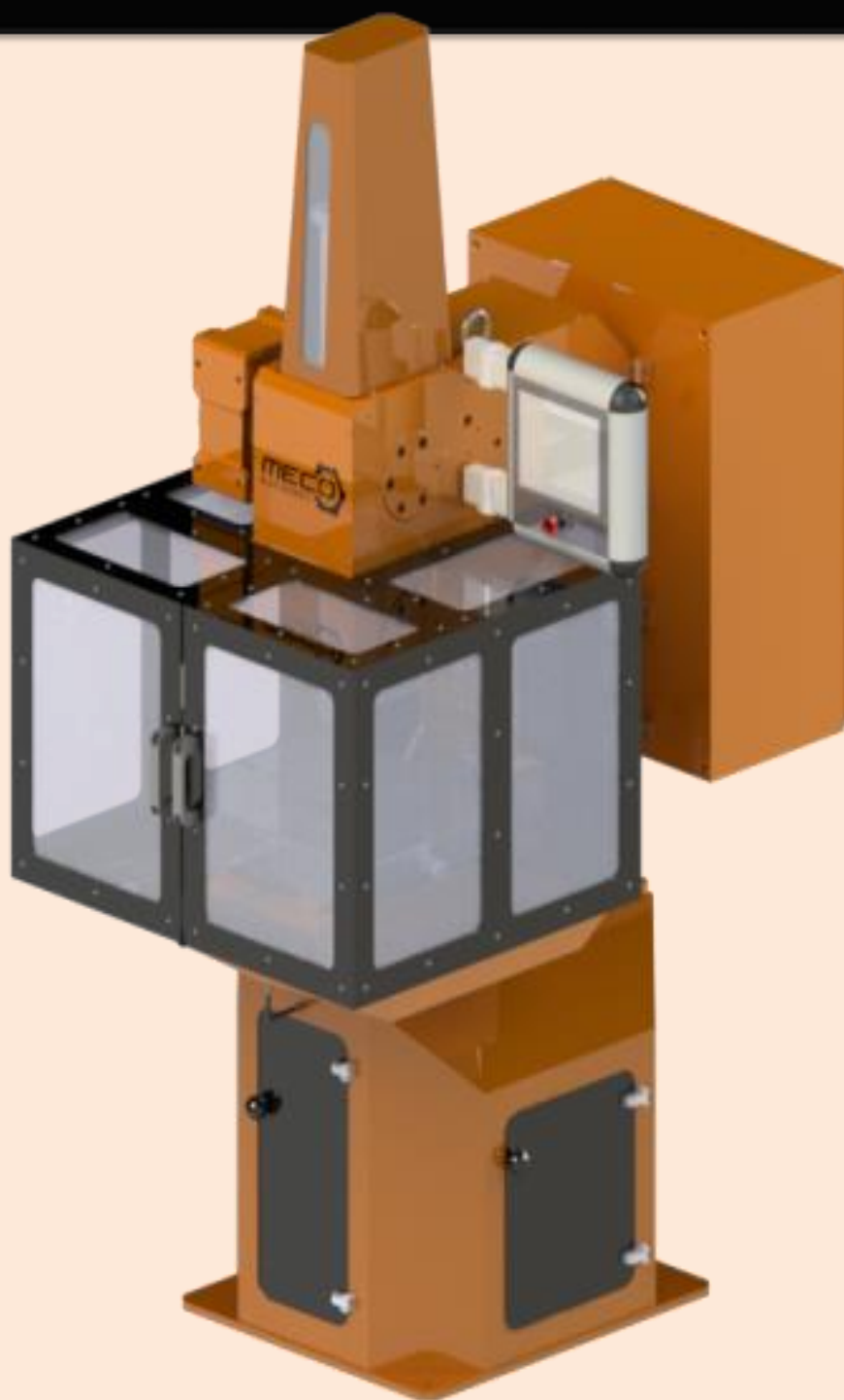




[®] **MECCO**
MACHINES

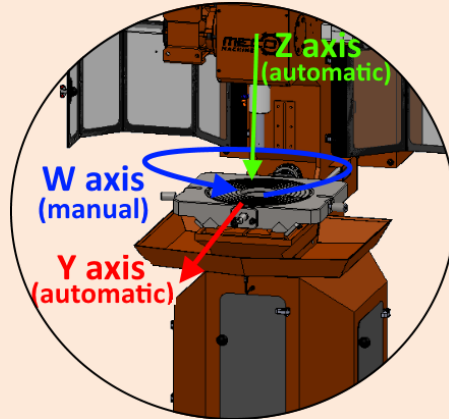


Keyseater Technical Features
MEC-70x340x600 AUTOMATIC

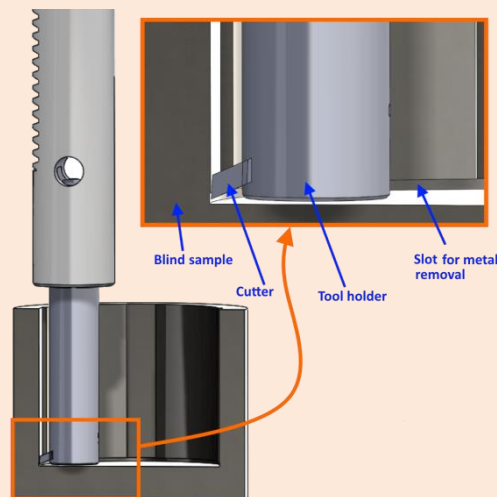
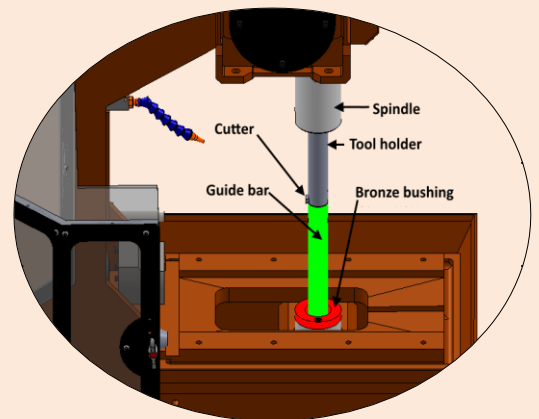




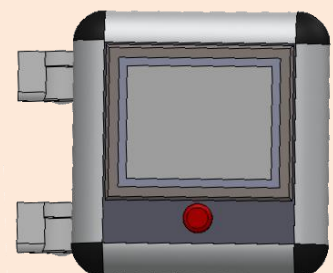
MEC-70x340x600 AUTOMATIC



✓ **2 AUTOMATIC AXES AND 1 MANUAL.** Thanks to the electronic control systems of last generation that have been incorporated in this model for two of its three axes, has achieved greater precision and a higher degree of automation. The machine can work in automatic mode, so that the operator can simply handle replace the part once the machine has finished the process of pre-programmed machining. Undoubtedly, the MECO Keyseaters are designed to increase the production capacity of our customers.



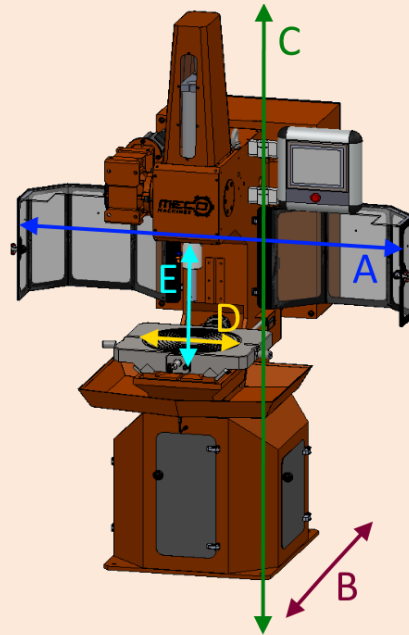
✓ **BLIND SAMPLES.** . Disassembly the guide bar and programming properly the limit switches, the tool can enter in blind parts and machining grooves or keyways.



**TECMO
TOOLS**



MEC-70x340x600 AUTOMATIC

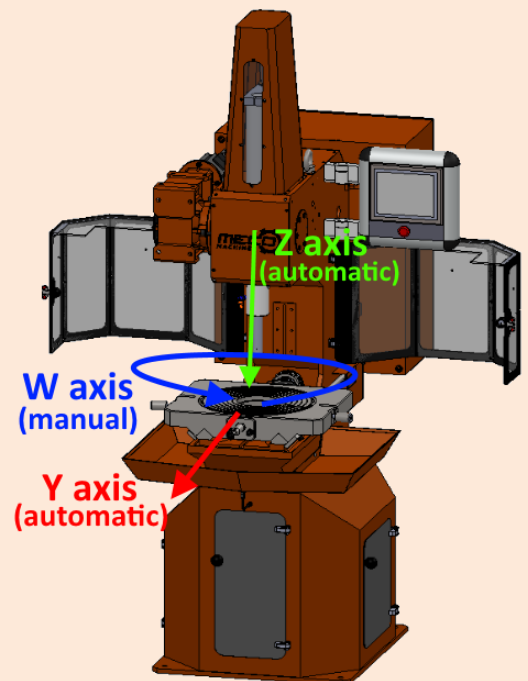


Machine Dimensions

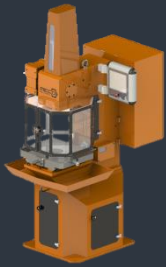
- **A** (Maximum Width with doors open): 1450mm
- **A'** (Maximum width, doors closed): 975 mm
- **B** (Maximum Depth of the machine): 1298 mm
- **C** (Maximum Higher of the machine): 2140 mm
- **D** (Maximum diameter of the sample): 600 mm
- **E** (Total working area): 378 mm
- (Machine Weight): 810 kg

Electrical Parameters

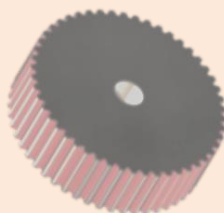
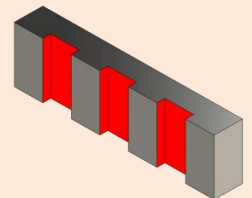
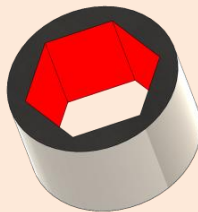
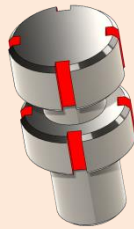
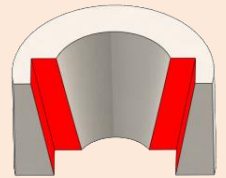
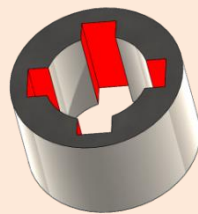
- Apparent power: 7822 VA
- Voltage: 400V
- Frequency: 50Hz.
- Connection: III+N+T



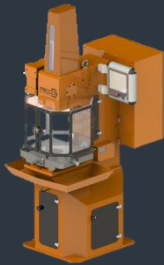
**TECMO
TOOLS**



MEC-70x340x600 AUTOMATIC



**TECMO
TOOLS**



MEC-70x340x600 AUTOMATIC

CUTTERS IN STOCK

At MECO we always have a large stock of standard blades and tool holders.

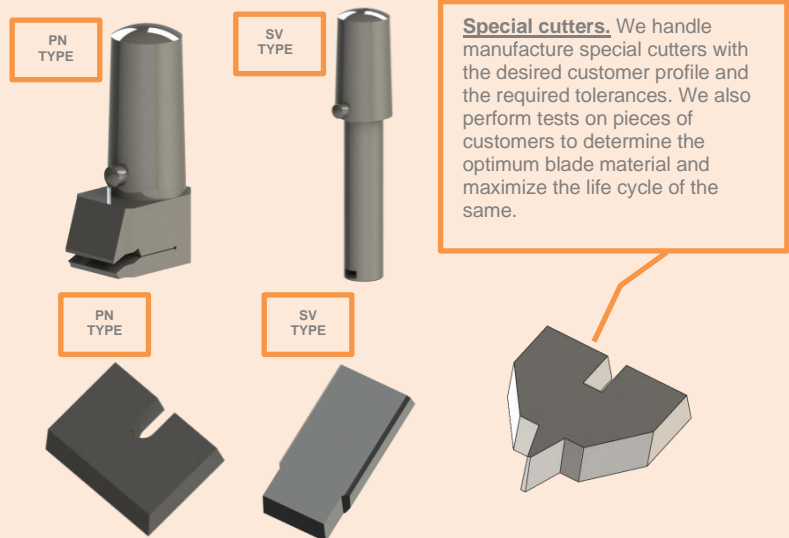
Blades will be delivered within 24 hours in H7 tolerance. Other tolerances or special blades 2-3 weeks.

SPECIAL CUTTERS

From the technical office of MECO we will bring solutions and special customized cutters. We oversee manufacturing the cutters with the desired customer profile and the required tolerances. We also conduct studies and tests with different materials to optimize and maximize the life of the tool in special applications.

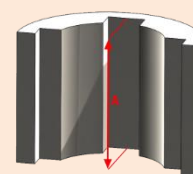
SUPPLIES

In MECO we guarantee our customers the supply of spare parts for the entire life cycle of the machine.

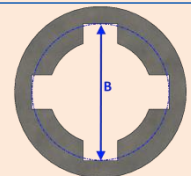


Geometric limits of standard cutters and toolholders

	WIDTH AND KIND OF TOOL (mm)	TOOL HOLDER REQUIRED	A (mm)	B (mm)	B' (mm)	C (mm)	D (mm)
MEC-70 CNC SV	3 FLG SV	3mm SV	25	96	96	2,0	11
	4 FLG SV	4mm SV	35	98	98	2,5	13
	5 FLG SV	5mm SV	45	100	100	3,1	14
	6 FLG SV	6mm SV	60	106	106	4,6	20
	8 FLG SV	8mm SV	90	109	109	4,6	24
	10 FLG SV	10mm SV	120	114	114	4,6	31
	12 FLG SV	12mm SV	138	117	116	3,3	36
	14 FLG SV	14mm SV	158	122	122	4,4	41
	16 FLR SV	From 16mm to 25mm SV	150	129	122	5,1	50
	18 FLR SV		150	133	126	7,4	53
20 FLR SV	Large 150mm	150	134	128	8,3	54	
22 FLR SV		150	133	126	7,4	54	
25 FLR SV		150	133	126	7,4	55	
MEC-70 CNC PN	25 FLG PN	From 25mm to 36mm PN	300	167	167	13,4	88
	28 FLG PN		300	167	167	13,4	88
	32 FLG PN		300	167	167	13,4	89
	36 FLG PN		300	167	167	13,4	90
	40 FLG PN	From 34mm to 42mm PN	300	167	167	13,4	91
	45 FLG PN	From 40mm to 50mm PN	300	167	167	13,4	92
	50 FLG PN		300	167	167	13,4	93

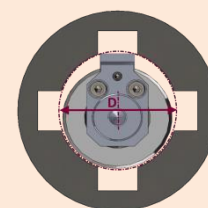
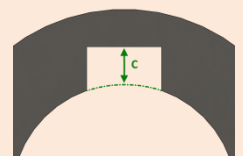


A: Maximum Higher of the Keyway.



Reach maximum diameter of the cutter with the sample centered
-B: Without bar guide
-B': With bar guide

C: Maximum Depth of the slot.



D: Minimum diameter of the hole.

* Mecco reserves the right to modify the parameters of the preceding table without notice.

* The upper limitations correspond to standard toolholders and cutters. However, Mecco can develop specials toolholders and cutters following the customers need.

